

SERVICE MANUAL

维修手册

客户/品牌

ENVISION

机种名

P2051



变更说明

[illegible]

目录

1. 技术规格	4
1.1 一般规格	4
1.2 工厂预设模式	5
2. 操作说明	6
2.1 控制面板	6
2.2 接口说明	7
2.3 OSD 菜单调整	9
3. 工厂模式调整	14
4. 故障处理流程	15
4.1 主板	15
4.2 电源板	18
4.3 按键板	20
5. 电气方框图	21
5.1 主板	21
5.2 电源板	22
6. 线路图	23
6.1 主板	23
6.2 电源板	27
6.3 按键板	29
7. 料件清单	30

1. 技术规格

1.1 一般规格

LCD 面板	市场型号	P2051
	驱动系统	TFT 彩色 LCD
	可视尺寸	508.05mm 对角
	像素间距	0.277mm(H) x 0.277mm(V)
	视频	R, G, B 模拟界面, DVI 界面
	独立同步	行 / 场 TTL
	显示颜色	16.7M 色彩
	点时钟	136Mhz
分辨率	水平扫描范围	30 kHz - 80 kHz
	水平扫描尺寸 (最大)	442.800 mm
	垂直扫描范围	55 Hz - 75 Hz
	垂直扫描尺寸 (最大)	249.075 mm
	预设的最佳分辨率	1600 x 900 (60 Hz)
	预设的最高分辨率	1600 x 900 (60 Hz)
	即插即用	VESA DDC2B/CI
	输入连接器	D-Sub 15 针, DVI-D
	输入视频信号	模拟: 0.7Vp-p (标准), 75 OHM, 正极性 和 TMDS, DVI-D
	电源	100~240VAC, 50/60Hz
	功率消耗	开机 < 45 W 离机 < 0.4 W
物理 特性	连接器类型	15- 针 Mini D-Sub, DVI-D
	信号电缆类型	可分离
	尺寸和重量:	
	高度 (含底座)	369 mm
	宽度	486.8 mm
	深度	148.5mm
	重量 (仅监视器)	3.83 kg
	重量 (含包装)	5.5 kg
环境	温度	
	工作时	0° - +40°
	非工作时	-20° - +60°
	湿度:	
	工作时	0% - 40% (非凝露)
	非工作时	10% - 90% (非凝露)
	海拔高度	
	工作时	0~3000m (0~10000 ft)
	非工作时	0~5000m (0~15000 ft)

1.2 工厂预设模式

标准	分辨率	水平频率 (kHz)	垂直频率 (Hz)
VGA	640 x 480 @60Hz	31.469	59.94
VGA	640 x 480 @72Hz	37.861	72.809
VGA	640 x 480 @75Hz	37.5	75
SVGA	800 x 600 @56Hz	35.156	56.25
SVGA	800 x 600 @60Hz	37.879	60.317
SVGA	800 x 600 @72Hz	48.077	72.188
SVGA	800 x 600 @75Hz	46.875	75
XGA	1024 x 768 @60Hz	48.363	60.004
XGA	1024 x 768 @70Hz	56.476	70.069
XGA	1024 x 768 @75Hz	60.023	75.029
SXGA	1280 x 720@60Hz	45	60
WSXGA	1600 x 900@60Hz	65.000	60

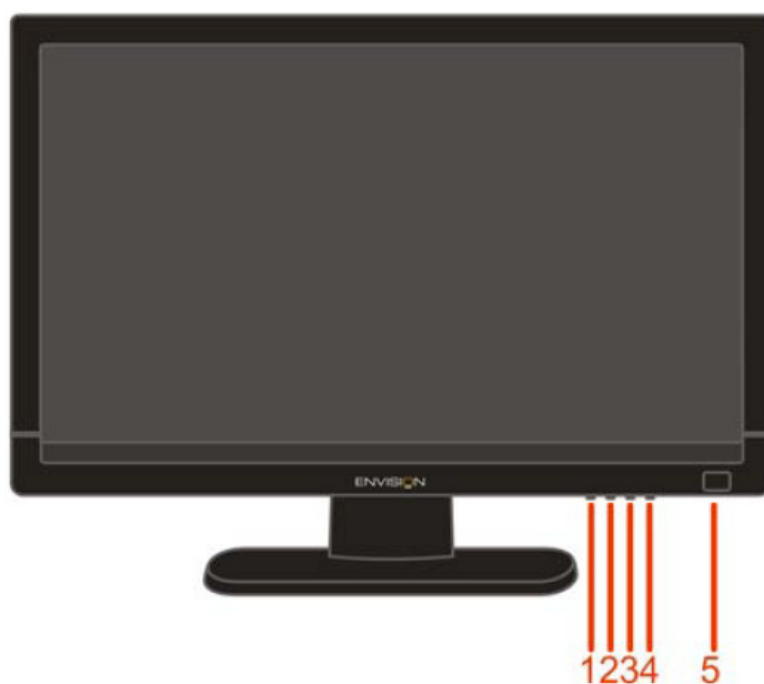
2. 操作说明

2.1 控制面板

外部控制

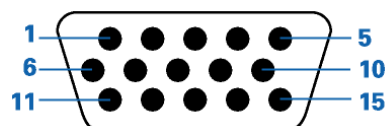
按电源开关即可开关显示器。其它功能按键位于前面板下方。通过调节这些功能键可得到您需要的画面。

- * 接好电源线。
- * 将信号线接到 PC 机显卡 。
- * 打开显示器把开关打到开机位置，电源指示灯亮。

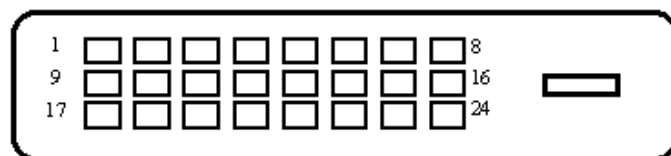


- 1.自动调整/ 信号源切换/退出
- 2.亮度情景模式（DCR） />
- 3.4: 3屏幕缩放/<
- 4.菜单/选择
- 5.电源开关

2.2 接口说明



管脚号	信号电缆的 15 针一端
1	视频 - 红色
2	视频 - 绿色
3	视频 - 蓝色
4	接地
5	检测电缆
6	GND-R
7	GND-G
8	GND-B
9	+5V
10	接地
11	接地
12	DDC- 串行数据
13	H- 同步
14	V- 同步
15	DDC- 串行时钟



管脚号	信号名称	管脚号	信号名称	管脚号	信号名称
1	TMDS 数据 2-	9	TMDS 数据 1-	17	TMDS 数据 0-
2	TMDS 数据 2+	10	TMDS 数据 1+	18	TMDS 数据 0+
3	TMDS 数据 2/4 屏蔽	11	TMDS 数据 1/3 屏蔽	19	TMDS 数据 0/5 屏
4	TMDS 数据 4-	12	TMDS 数据 3-	20	TMDS 数据 5-
5	TMDS 数据 4+	13	TMDS 数据 3+	21	TMDS 数据 5+
6	DDC 时钟	14	+5V 电源	22	TMDS 时钟屏蔽
7	DDC 数据	15	接地（对于 +5V）	23	TMDS 时钟 +
8	N.C.	16	热插拔检测	24	TMDS 时钟 -

2.3 OSD 菜单调整

- 按 MENU 按钮启动 OSD 窗口。
- 按>或<浏览这些功能。 如果想要调整的功能突出显示，按 MENU 按钮启动它。如果所选的功能包含有子菜单，再按一下>或<可以浏览到子菜单功能。如果想要调整的功能突出显示，按 MENU 按钮启动它。
- 按>或<更改所选功能的设置。要退出和保存，请选择退出功能。
- 如果您想调整其它任何功能，请重复步骤 2-3 。
- OSD 锁定功能： 要锁定 OSD ，请在显示器关闭时按住 菜单 按钮，然后按电源按钮打开显示器。 要解锁 OSD ，请在显示器关闭时按住 菜单 按钮，然后按电源按钮打开显示器。
- 亮度情景模式及动态对比度热键： 在画面没有OSD时，连续按此热键可选择不同的亮度情景应用模式及打开动态对比度功能。
- 4:3及宽屏画面切换热键： 在画面没有OSD时，连续按此键可进行4:3或宽屏显示模式切换(如果产品屏幕尺寸是4:3 或者输入信号的分辨率是宽屏模式时，此键无作用)。
- 信号源快捷键： 当没有OSD菜单时，按信号源快捷键启动信号源切换功能(仅针两种输入信号及以上机型) ,连续按信号源切换键来选择信息栏中显示的信号源，按菜单键/选择键调整为选择的信号源。
- 自动调整快捷键： 当没有OSD菜单时，按自动调整快捷键2秒可启动自动调整功能。



菜单图标说明

	明亮度	调整数值	说明
	亮度	0-100	调整显示亮度
	对比度	0-100	调整显示对比度
	亮度情景模式	标准 	正常使用模式
		节能 	文本应用模式
		网络 	网络应用模式
		游戏 	游戏应用模式
		电影 	观赏电影应用模式
		运动 	观赏户外运动模式
	伽玛	伽玛 1	调整为伽玛值 1
		伽玛 2	调整为伽玛值 2
		伽玛 3	调整为伽玛值 3
	DCR	关 闭 	关闭动态对比度
		开 启 	开启动态对比度

	图像设置		
	时钟	0-100	调整图片时钟以降低垂直线噪声
	相位	0-100	调整图片相位以降低水平线噪声
	水平位置	0-100	调整图片的水平位置
	垂直位置	0-100	调整图片的垂直位置
	色温		
	暖色	6500K	设置为暖色温
	正常色	7300K	设置为正常色温
	冷色	9300K	设置为冷色温
	sRGB		设置为 sRGB
	用户设定	红	微调红色色温
		绿	微调绿色色温
		蓝	微调蓝色色温
	色彩增强		
	全色增强	关闭/开启	开启或关闭全色增强模式
	自然肤色	关闭/开启	开启或关闭自然肤色模式
	绿茵场景	关闭/开启	开启或关闭绿色增强模式
	蔚蓝风景	关闭/开启	开启或关闭蓝色增强模式
	自动检测	关闭/开启	开启或关闭自动增强模式
	演示	关闭/开启	开启或关闭左画面演示

	窗口增亮		
	窗口尺寸	14-100	调整窗口尺寸大小
	亮 度	0-100	调整窗口亮度
	对比度	0-100	调整窗口增强对比度
	水平位置	0-100	调整水平窗口位置
	垂直位置	0-100	调整垂直窗口位置
	增亮	关闭/开启	开启或关闭增亮窗口
	OSD 设置		
	水平位置	0-100	调整 OSD 水平位置
	垂直位置	0-100	调整 OSD 垂直位置
	显示时间	5-120	调整 OSD 显示时间
	透明度	0-100	调整 OSD 透明度
	语言		选择 OSD 语言
	其它		
	输入选择	自动	自动检测输入信号
		D-SUB	选择输入为模拟信号源
		DVI	选择输入为数字信号源

	自动调整	是或者否	自动调整画面
	画面比例	宽屏或 4:3	选择宽屏或 4:3 显示格式
	DDC-CI	是或者否	打开/关闭 DDC-CI 支持
	显示信息		显示输入信号信息
	重置		
	重置	是或者否	恢复到出厂设置
	退出		
	退出		退出 OSD

3. 工厂模式调整

进入工厂模式方法：

机器应处于开机状态，关断输入的220V电源，先按住MENU键，然后接通电源，工厂模式菜单将位于屏的左上角。

a.基本调整:

设置对比度  为 50。

设置亮度  为 80。

b.增益调整:

调整9300K色温

1、选中“AUTO LEVEL”先进行底光栅自动调整

2、按“MENU”选择9300K进行R G B增益调整

$$x = 283 \pm 20, y = 297 \pm 20, Y = 150 \pm 30 \text{ cd/m}^2$$

调整7300K色温

1、选中“AUTO LEVEL”先进行底光栅自动调整

2、按“MENU”选择7300K进行R G B增益调整

$$x = 302 \pm 20, y = 318 \pm 20, Y = 180 \pm 30 \text{ cd/m}^2$$

调整6500K色温

1、选中“AUTO LEVEL”先进行底光栅自动调整

2、按“MENU”选择 6500K 进行 R G B 增益调整

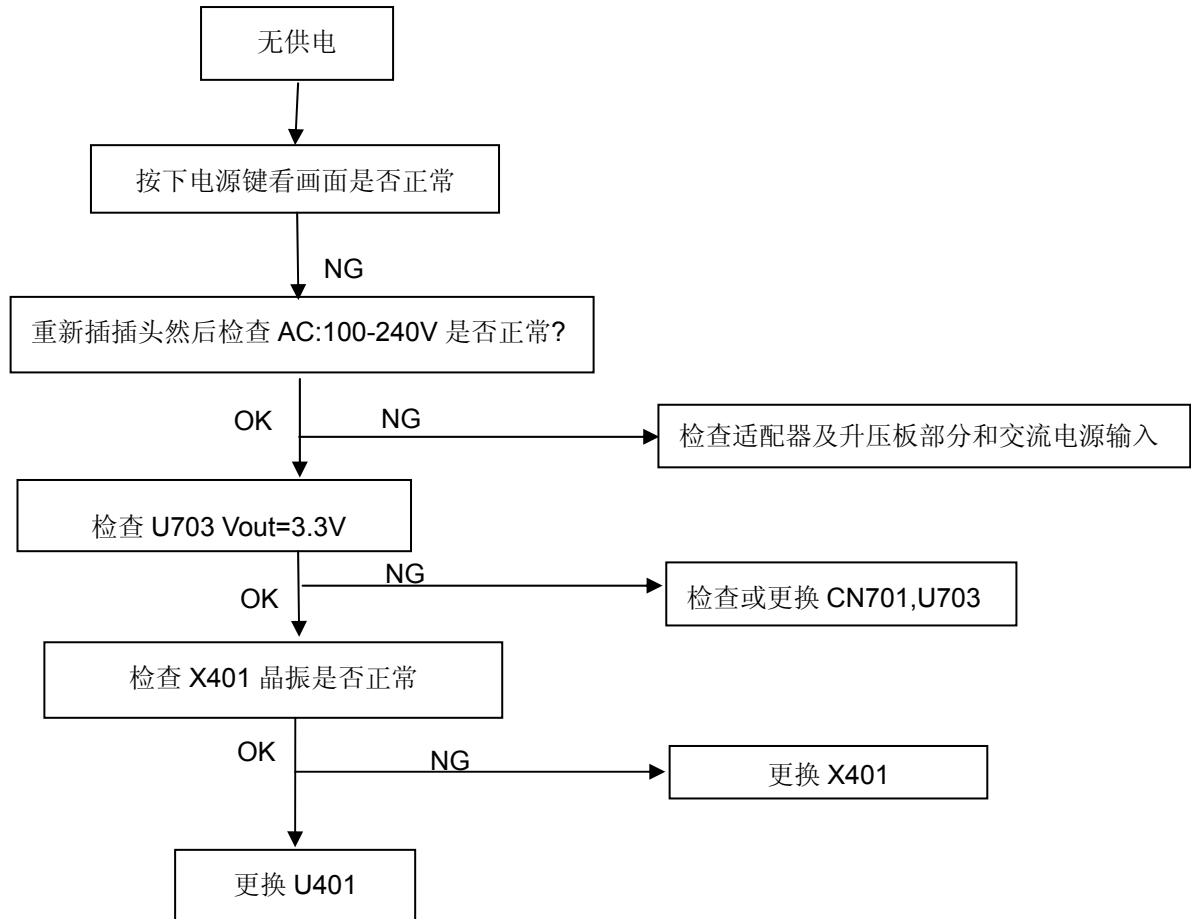
$$x = 313 \pm 20, y = 329 \pm 20, Y = 180 \pm 30 \text{ cd/m}^2$$

c.调整完毕直接关闭电源。

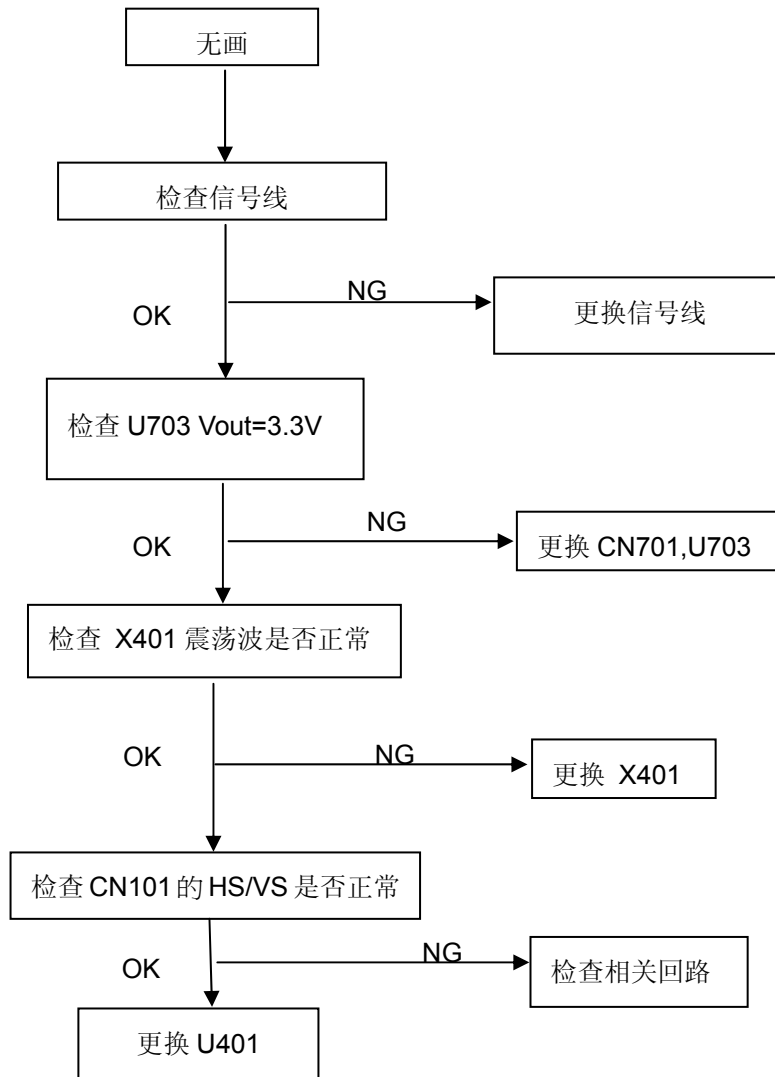
4. 故障处理流程

4.1 主板

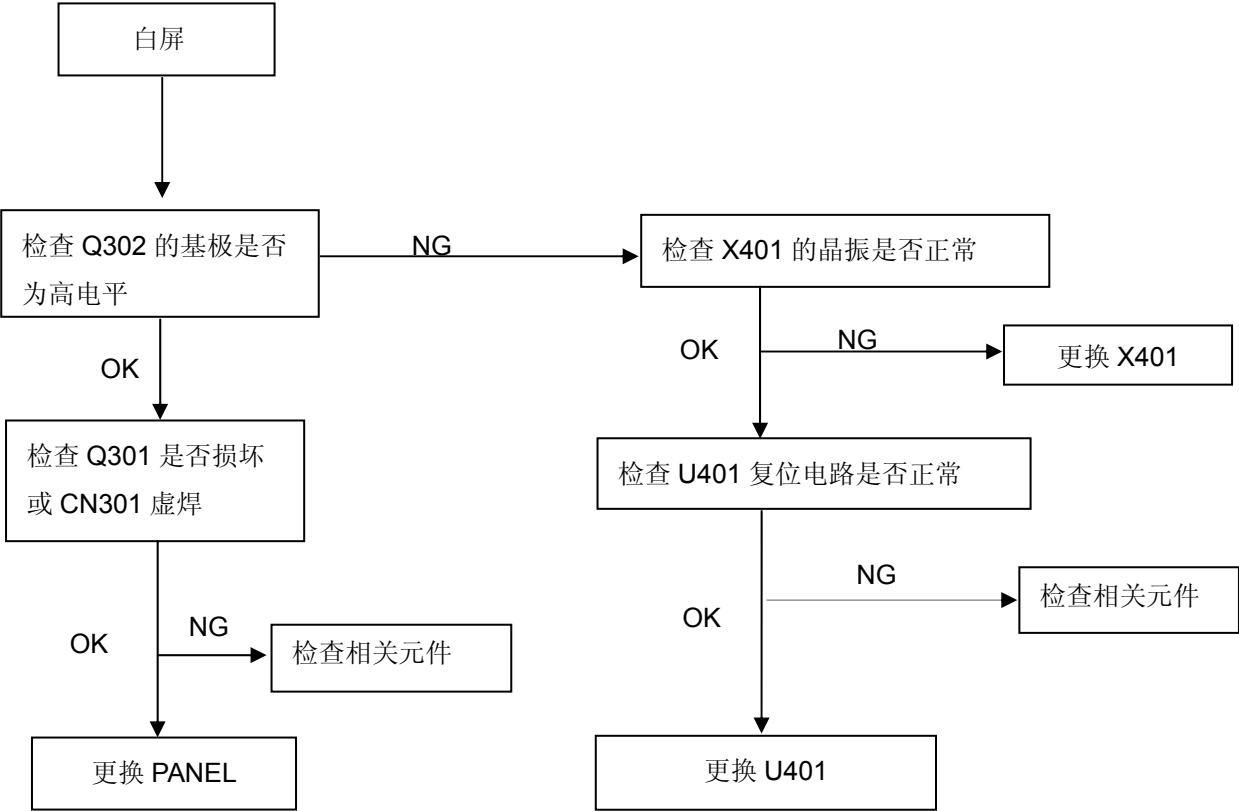
无供电



无画 (LED 橙色)

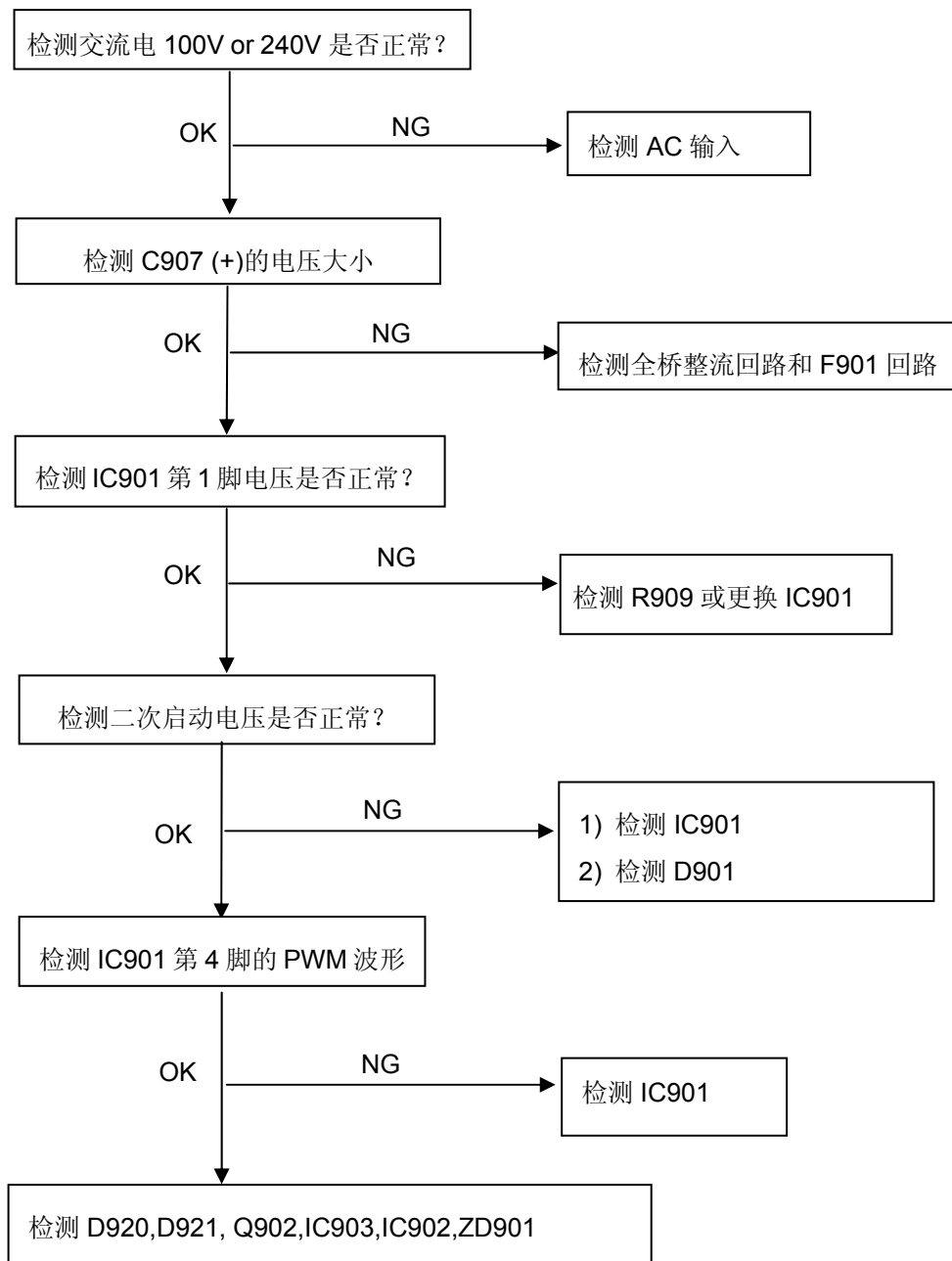


白屏

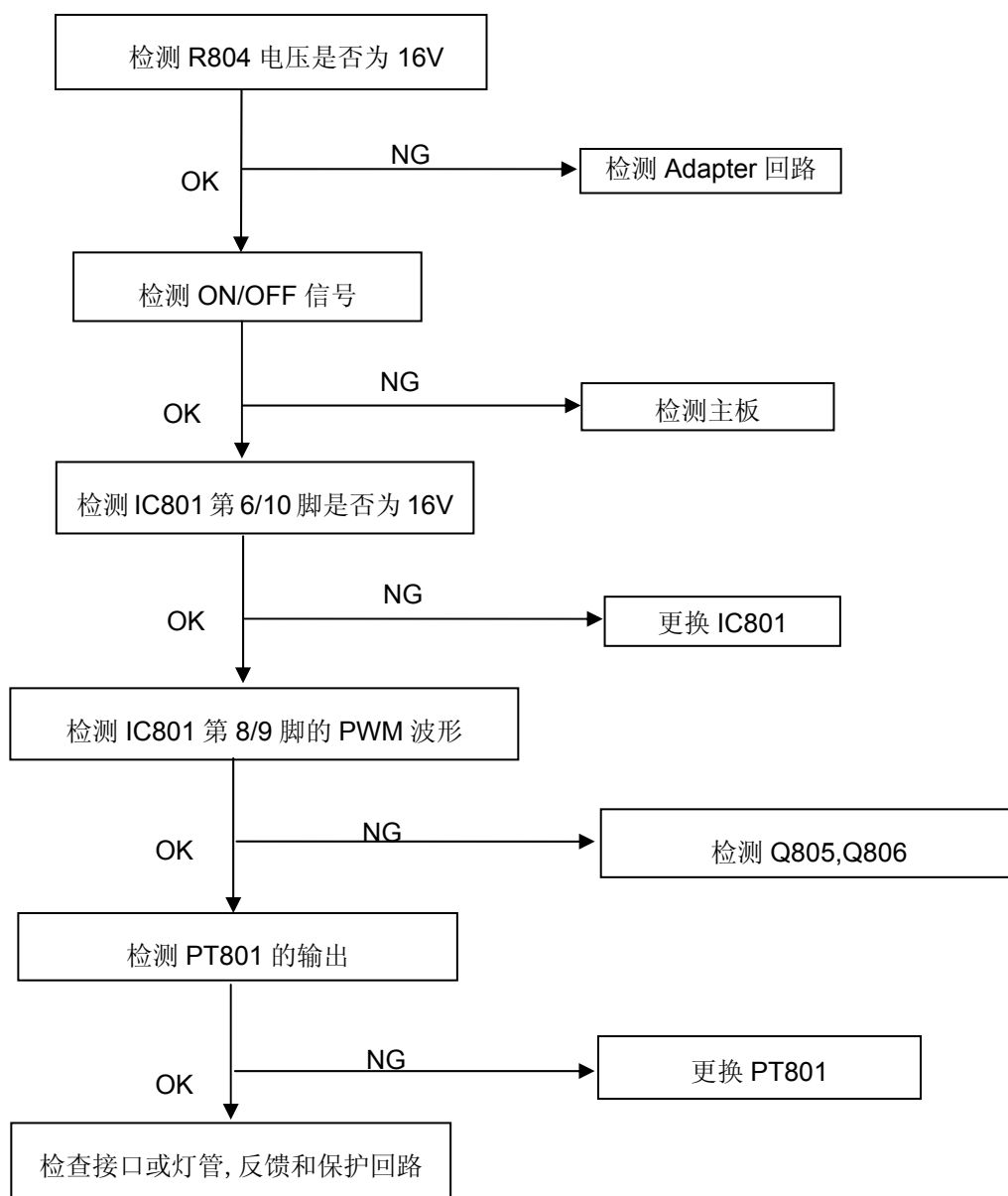


4.2 电源板

死机

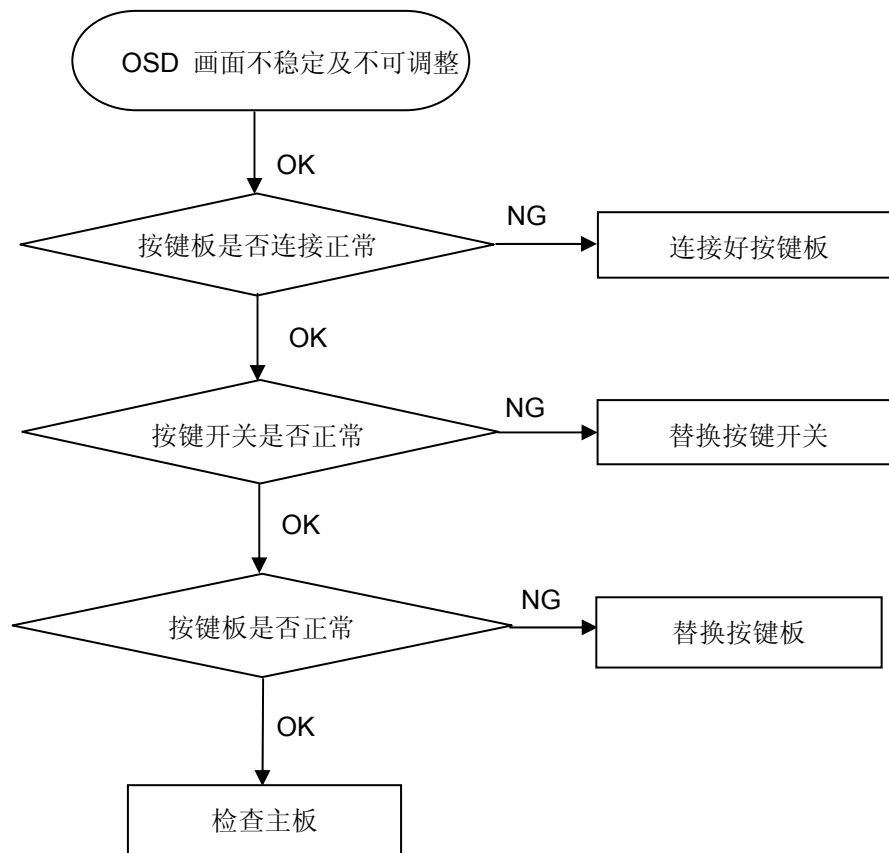


无背光



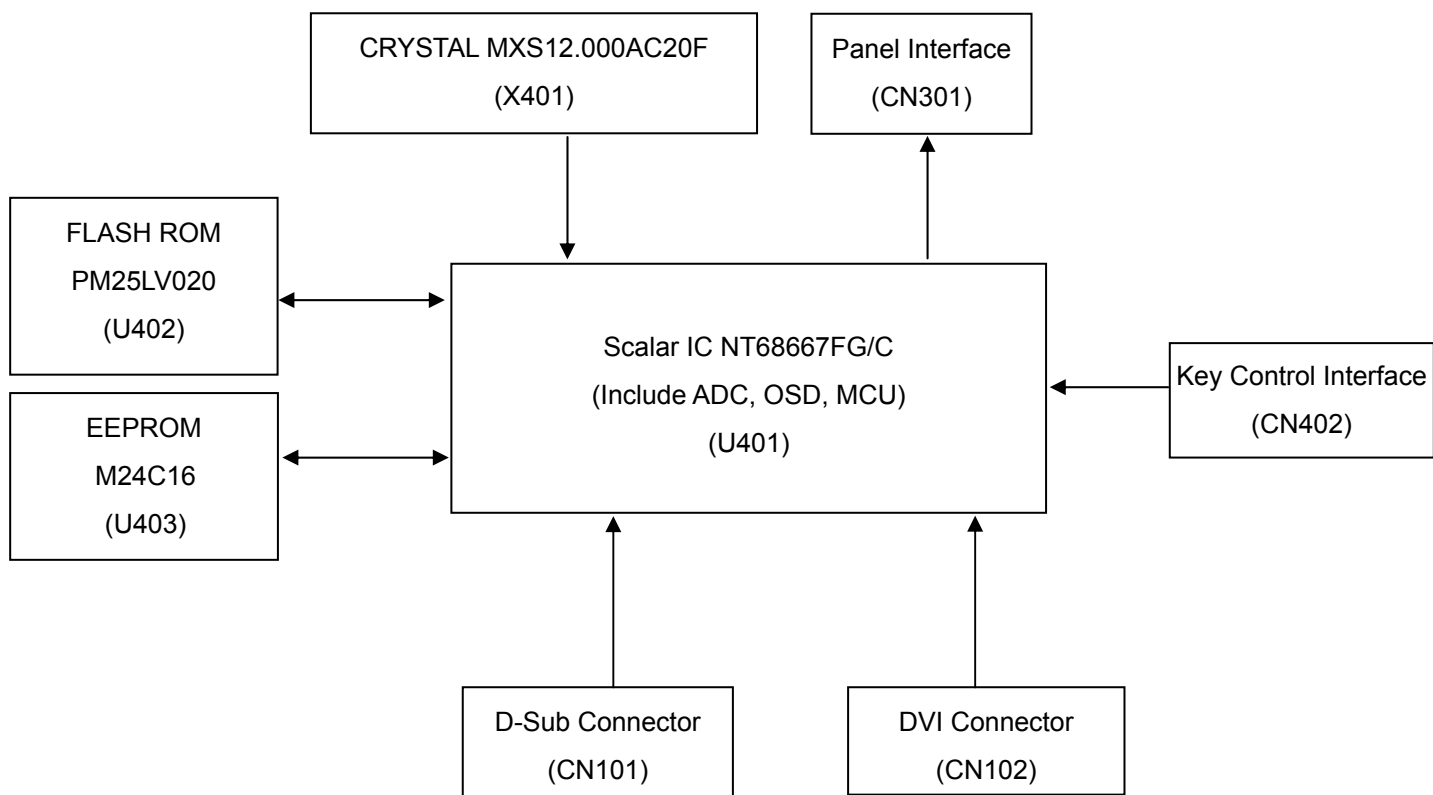
4.3 按键板

OSD 画面不稳定及不可调整

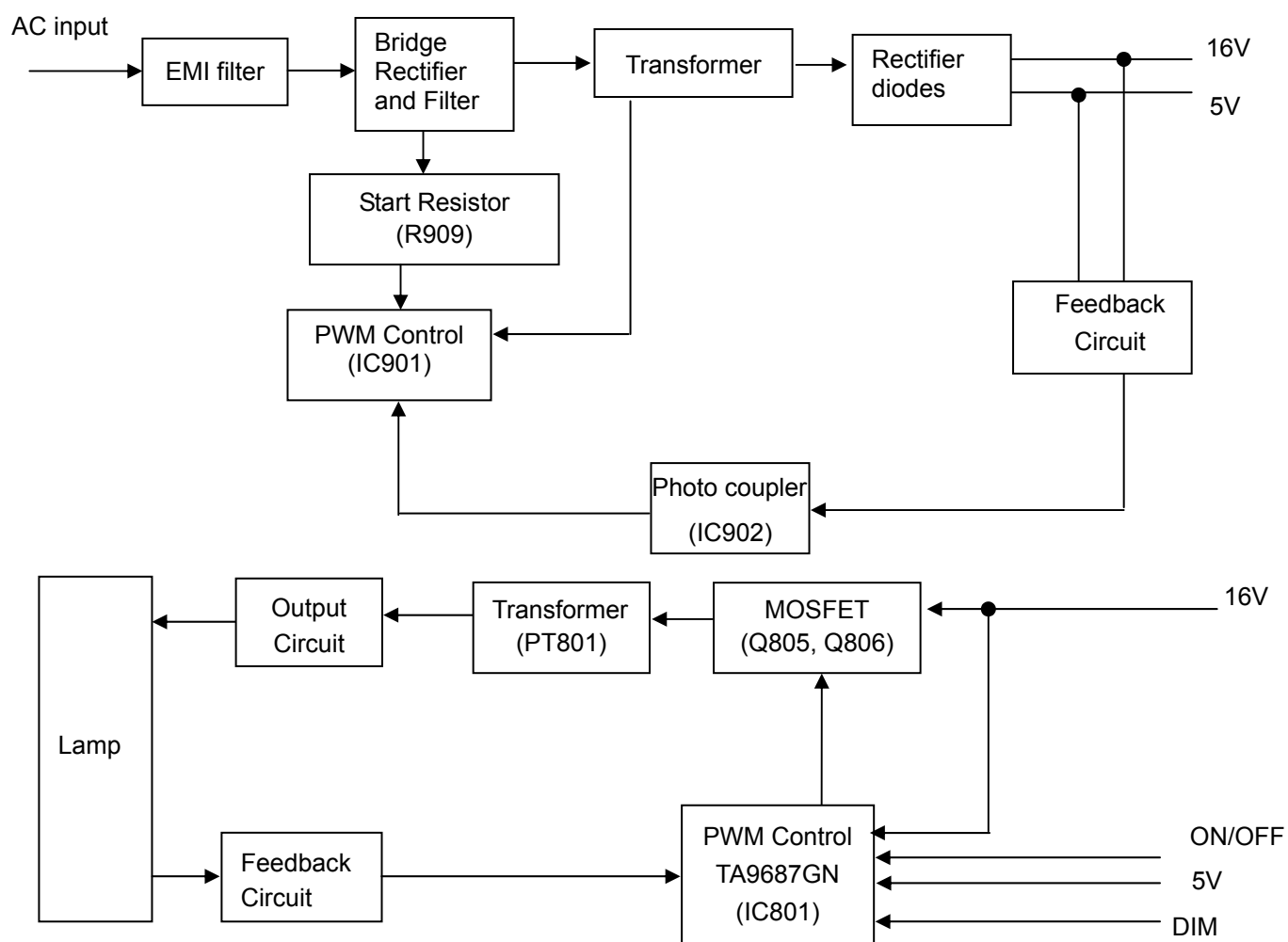


5 电气方框图

5.1 主板

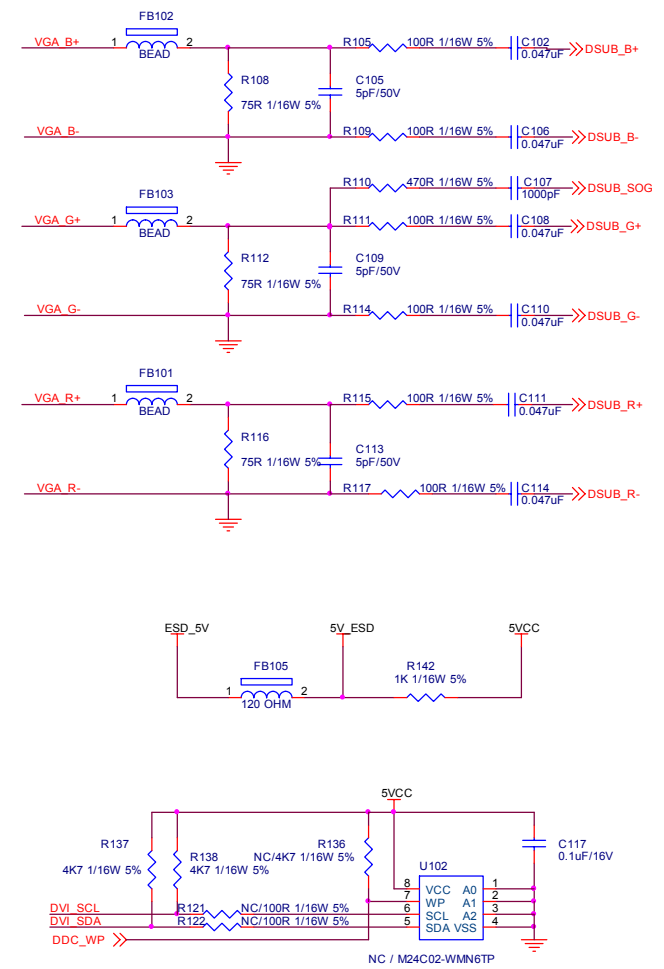
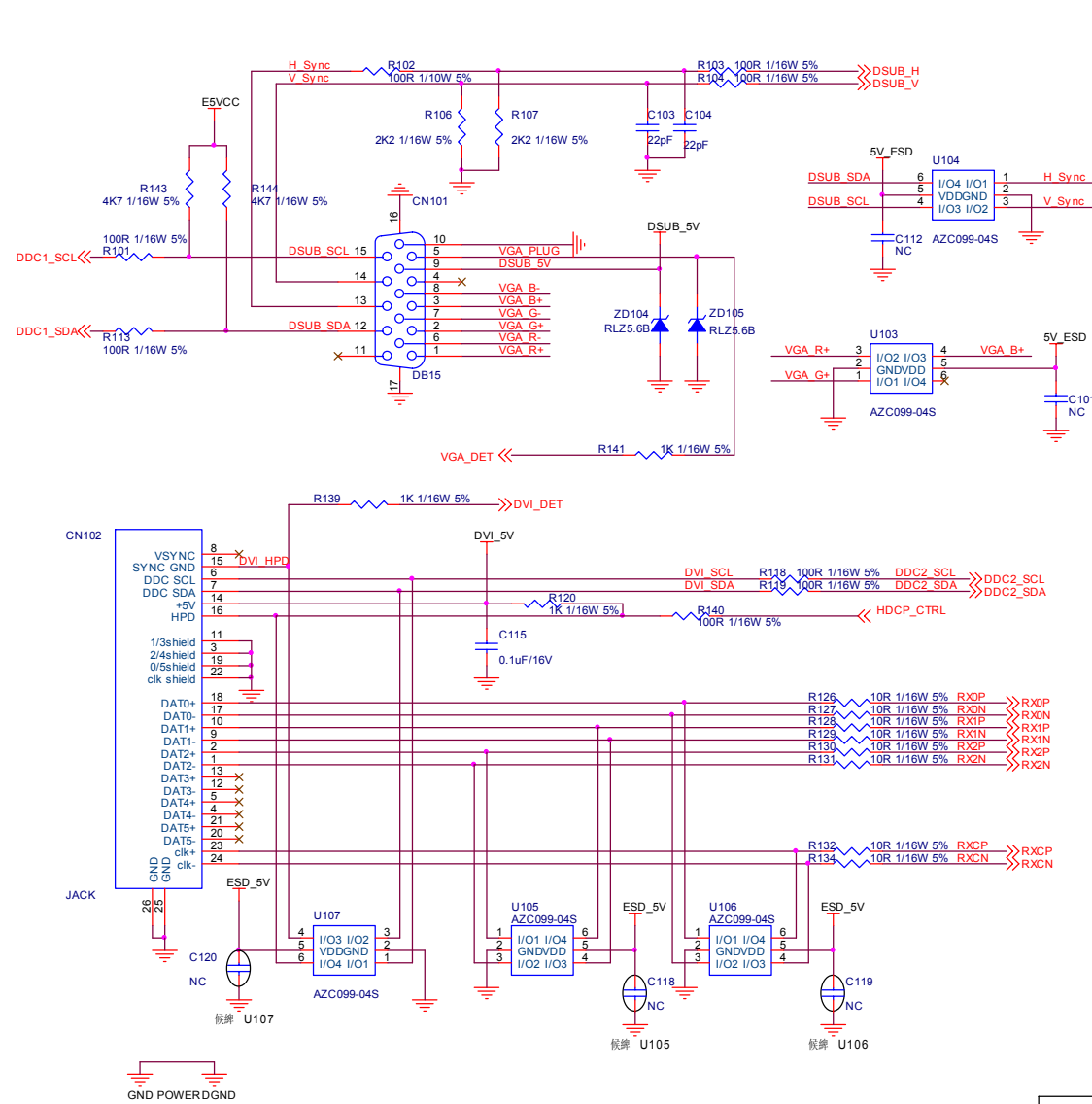


5.2 电源板

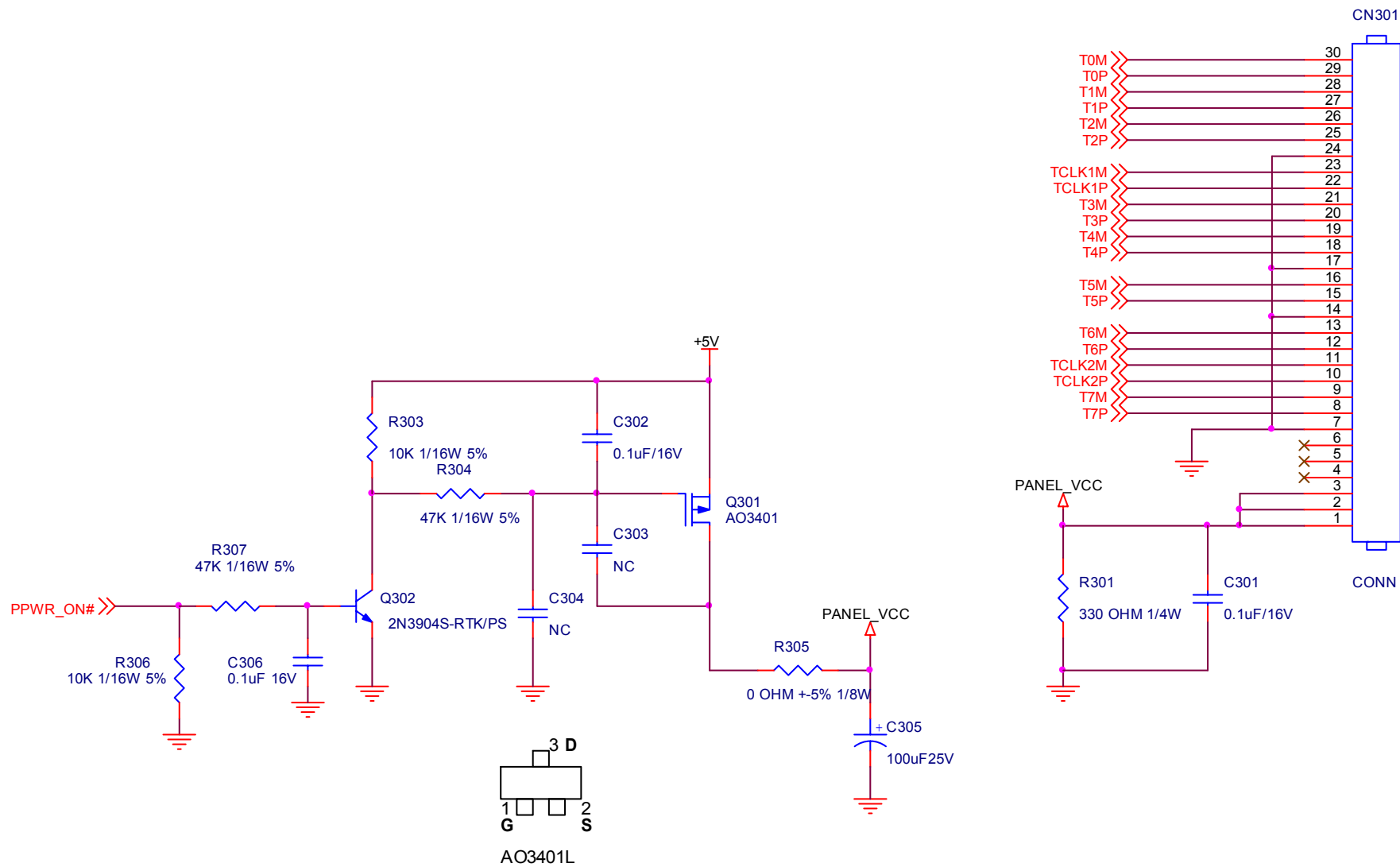


6. 线路图

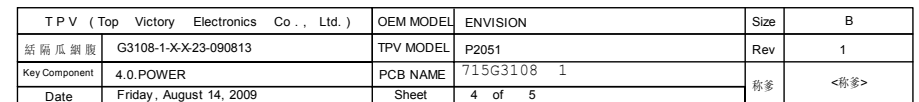
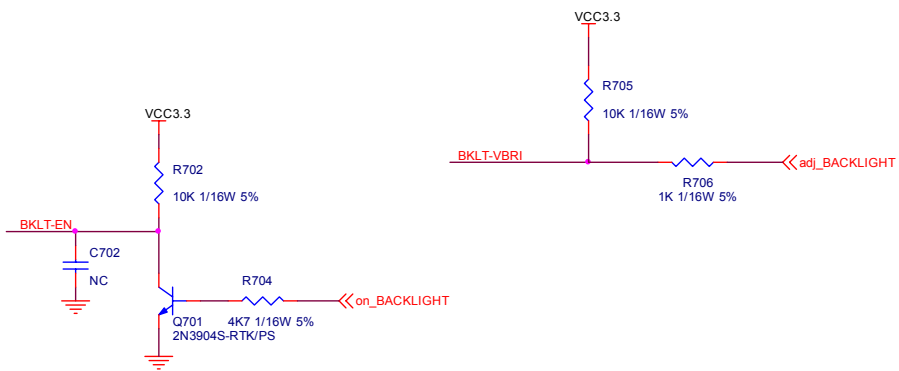
6.1 主板

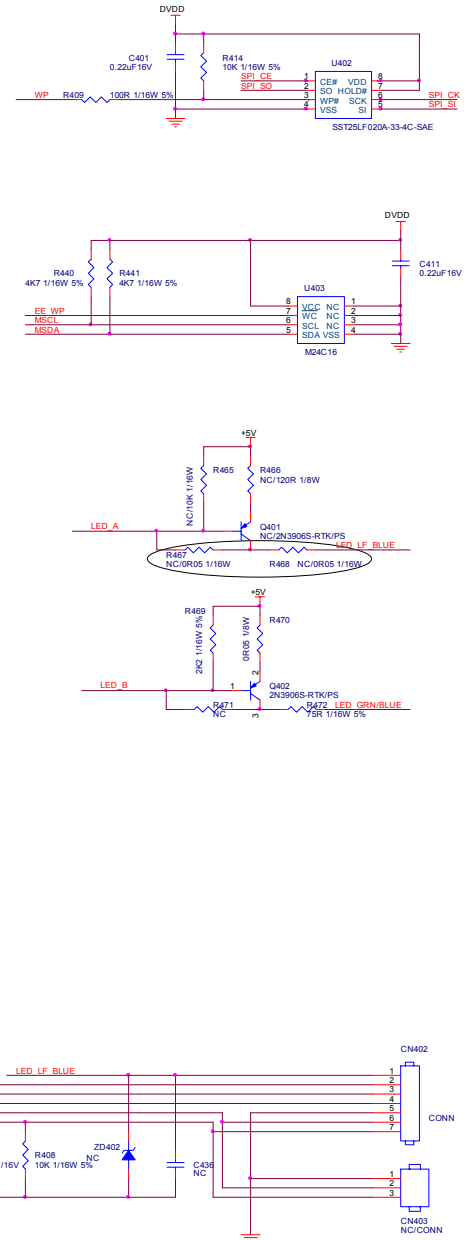


TPV (Top Victory Electronics Co., Ltd.)	OEM MODEL	ENVISION	Size	B
紙隔瓜銅膜	G3108-1-X-X23-090813	TPV MODEL	P2051	Rev
Key Component	2.0.INPUT	PCB NAME	715G3108 1	称差
Date	Friday, August 14, 2009	Sheet	2 of 5	<称差>



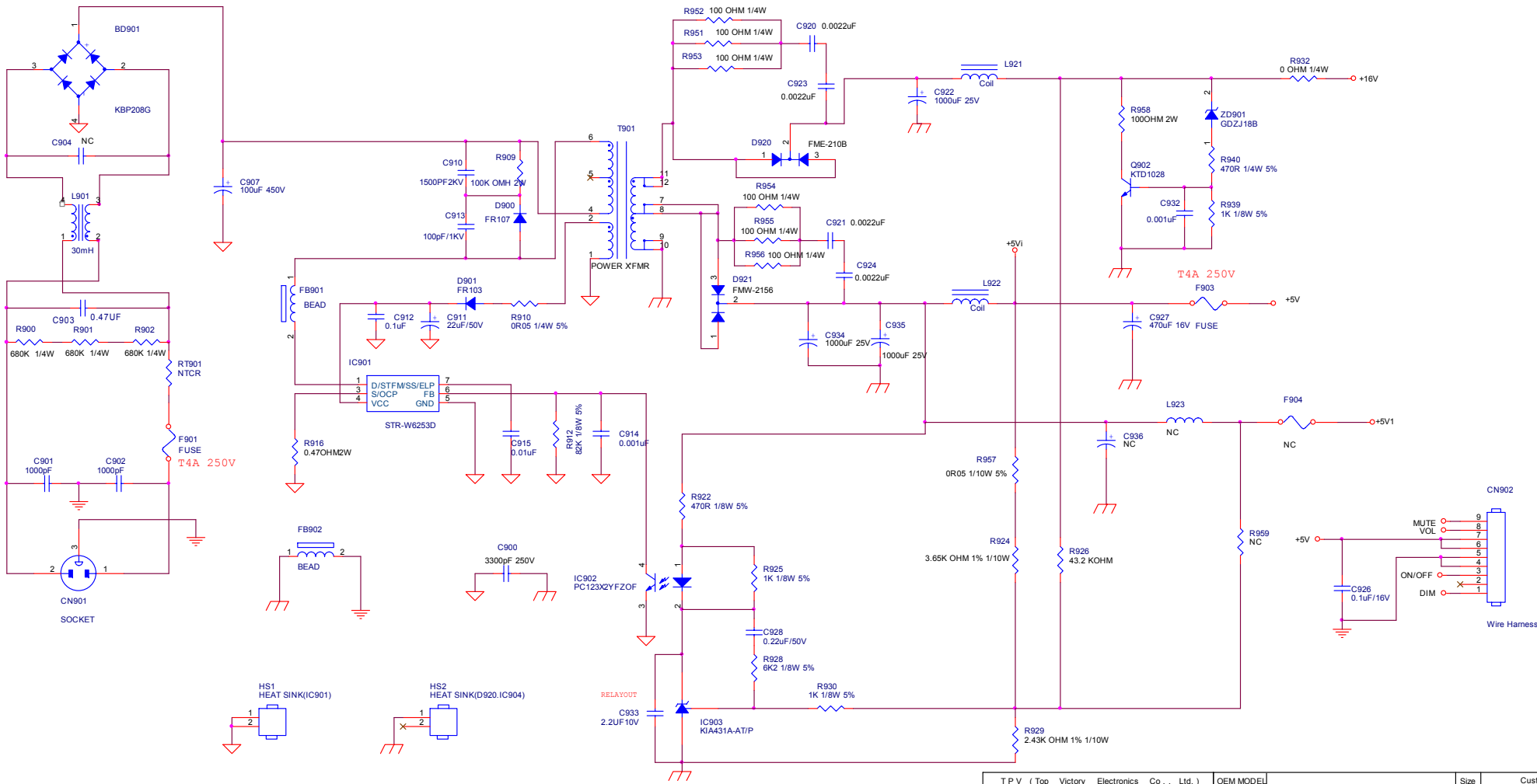
TPV (Top Victory Electronics Co., Ltd.)	OEM MODEL	ENVISION	Size	A
結構網腹	G3108-1-X-X-23-090813	TPV MODEL	Rev	1
Key Component	3.0.OUTPUT	PCB NAME	715G3108 1	称爹 <称爹>
Date	Friday, August 14, 2009	Sheet	3 of 5	



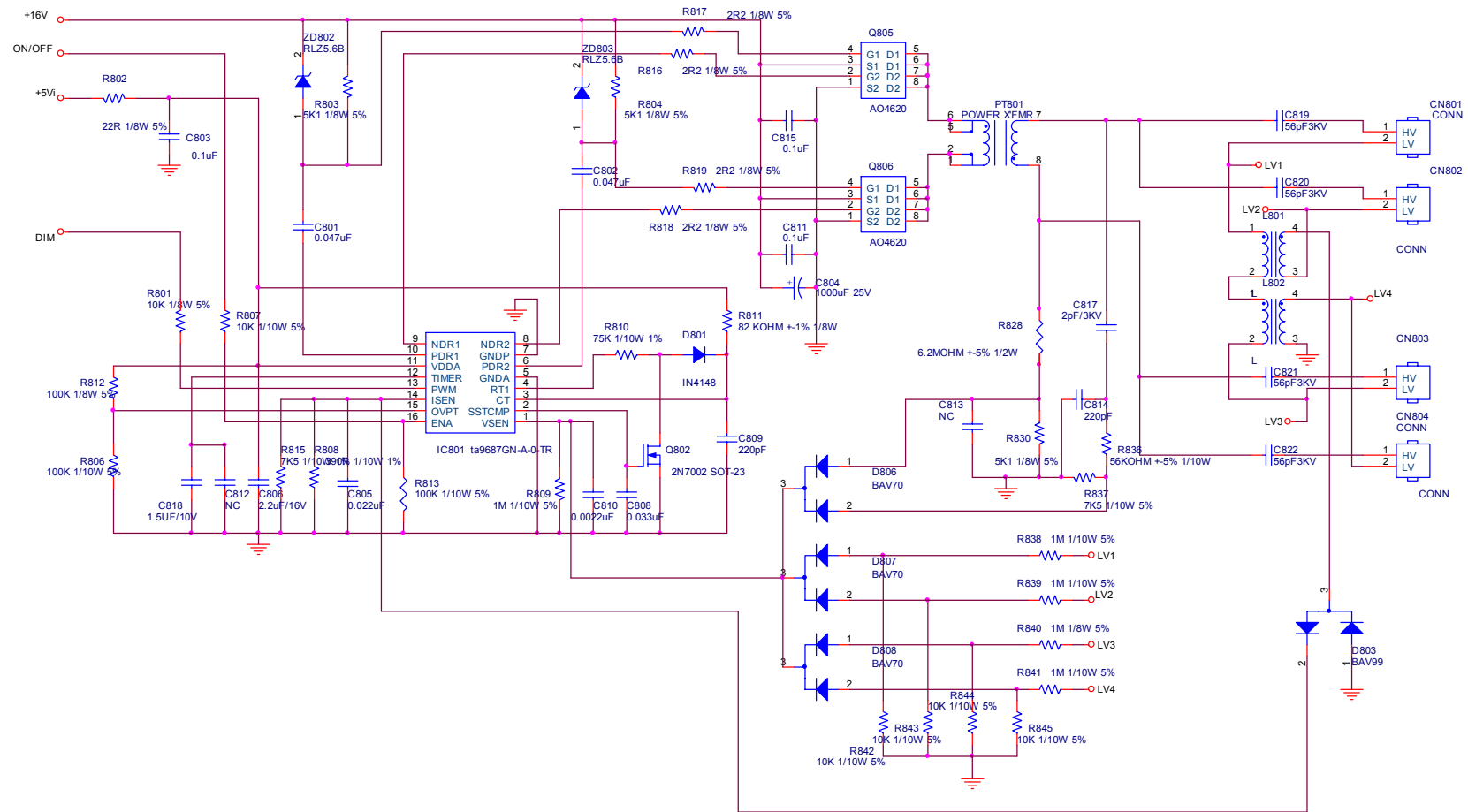


T P V (Top Victory Electronics Co., Ltd.)		OEM MODEL	ENVISION	Size	C
振周低頻機	G3108-1-X-X23-090813	TPV MODEL	P2051	Rev	1
Key Component	5.0 SCALER	PCB NAME	715G3108 1	料號	<料號>
Date	Friday, August 14, 2009	Sheet	5 of 5		

6.2 电源板

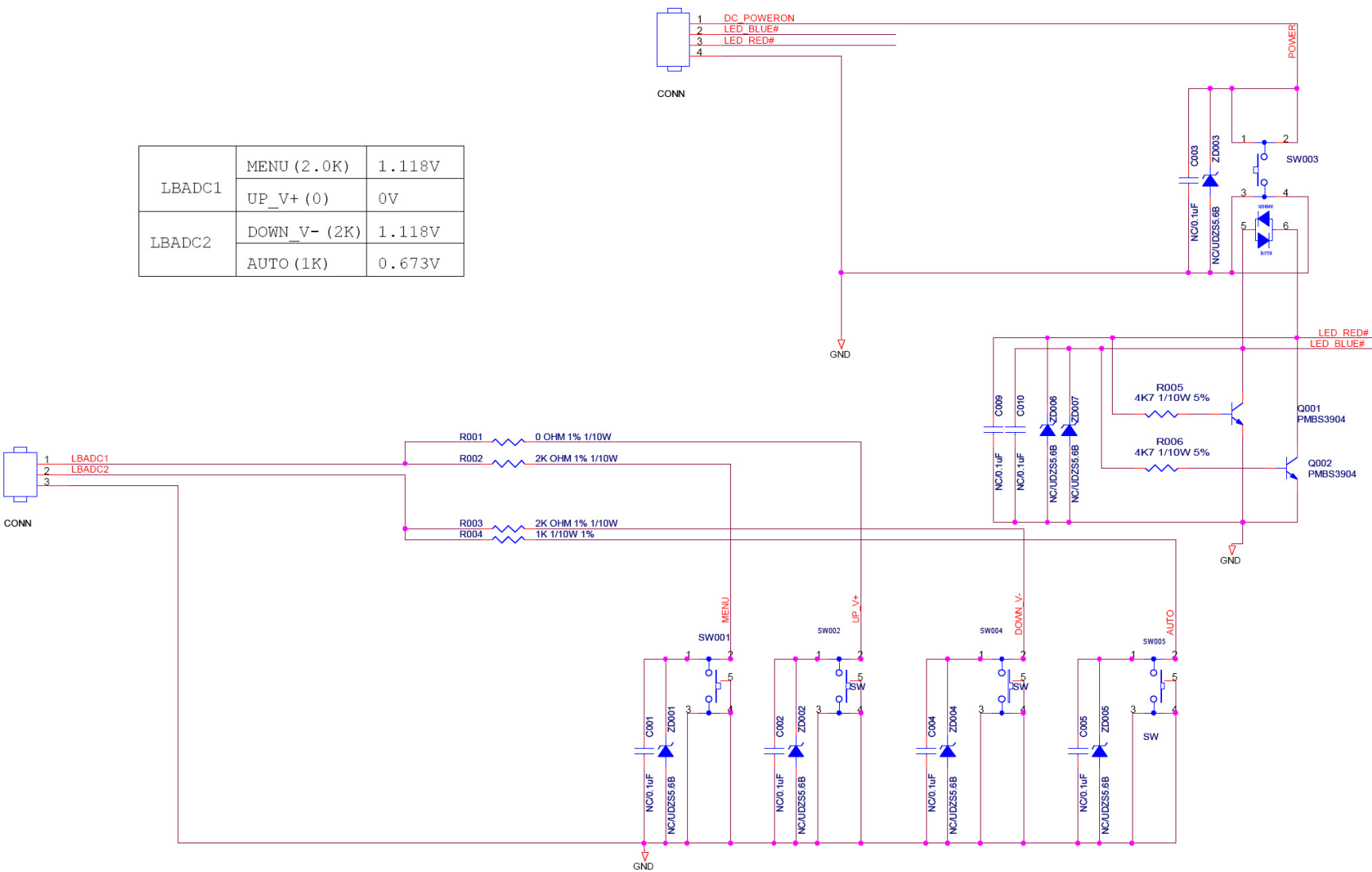


TPV (Top Victory Electronics Co., Ltd.)	OEM MODEL		Size	Custom
話 話 話 話 話	G2892-B-7-X2-081208	TPV MODEL	PWPC8C41MYF2	Rev
Key Component	02.POWER	PCB NAME	715G2892-B-7	A
Date	Wednesday, December 10, 2008	Sheet	2 of 4	ODM MODEL



T P V (Top Victory Electronics Co., Ltd.)	OEM MODEL		Size	Custom
話 隔 瓜 網 廠	G2892-B-7-X2-081208	TPV MODEL	PWPC8C41MYF2	Rev A
Key Component	03.INVERTER	PCB NAME	715G2892	称 参 ODM MODEL
Date	Monday, December 08, 2008	Sheet	of	

6.3 按键板



LBADC1	MENU (2.0K)	1.118V
	UP_V+ (0)	0V
LBADC2	DOWN_V- (2K)	1.118V
	AUTO (1K)	0.673V

TPV (Top Victory Electronics Co., Ltd.)		OEM MODEL	ENVISION 20"	Size	B
嘉利瓜銅製		G3331-A-X-X-080818	P2051	Rev	A
Key Component	FUNCTION	PCB NAME	KEY BOARD	修修 <修修>	
Date	Wednesday, December 17, 2008	Sheet	2 of 2		



7. 料件清单

TARGNDNYHWE1HN

点位	组件	对象描述	备注
	040G 58162461A	EPA LABEL	
	052G 1207 A	CONDUCTIVE TAPE 45MM *25MM *0.08MM	
	052G 1211 B	CONDUCTIVE TAPE 85MM *40MM *0.09MM	
	052G 2191 A	PAPER TAPE	
	052G6019 1	INSULATING TAPE	
	070GHDCP500HDC	HDCP CODE	
E08922	089G 725GAADBD	D-SUB CABLE 1500MM	
E08922	089G 725LAADBD	D-SUB CABLE 1500MM	2nd Source
E08903	089G1745CAA AC	DVI CABLE	2nd Source
E08903	089G1745HAA AC	DVI CABLE	
	089G179J30N 9C	FFC CABLE	
E08901	089G414A15N IS	POWER CORD	
E08901	089G414A15N YH	POWER CORD	2nd Source
E09502	095G8014 6DH60	HARNESS 6P-4P(A1253HA HR)+3P(A1253HA HR)	
E09502	095G8014 6XH60	HARNESS 6P-4P(A1253HA HR)+3P(A1253HA HR)	2nd Source
	0M1G 130 6120	SCREW M3X6	
	0M1G1730 6120	SCREW,42-D020523	
	0Q1G 930 5120	SCREW	
	750GLG200W1A13N000	PANEL LM200WD1-TLA1 GZ LGD	
	756GQ8CB AA073	MAIN BOARD-CBPCRNDE1QF	
SMTCR-U402	100GANGA000N11	MCU ASS'Y-056G1133 90 1	
	AM1G1740 12 47 CR3	SCREW	
	Q15G0409101	MAIN FRAME FOR P2051	
	Q33G0264ABJ 1L0100	OSD BUTTON	
	Q33G0265 2 1C0100	POWER? LENS	
	Q33G0266AED 1L0100	POWER BUTTON	
	Q34G0563AEDA1B0130	BEZEL(L20W-951)	
	Q34G0564ABJA1B0130	REAR COVER 20"	
	Q34G0565ABJ 1B0100	REAR POWER COVER	
	Q40G000262822A	CEL LABEL FOR TFT20W90PS G2	
	Q40G000267371A	POP LABEL FOR P2051	
	Q40G0002983 1A	VISTA LABEL	
	Q41G780067374A	P2051 QSG	
	Q44GA065101	EPS FOR P2051	
	Q44GA065201	EPS FOR P2051	
	Q44GA065673 1A	20 LCD CARTON	
	Q45G 88609107	PE BAG	
	Q50G 4 10	TIE (Y1900221)	
	Q52G 1185110	BIG TAPE FOR ENVISION	
	Q85G0117101	AC-SHIELD	
	Q41G780067340G	WARRANTY CARD	
	Q45G 76 28 RN R	PE BAG MANUAL	
	Q70G2001673 1A	P2051 CD MANUAL	
	040G 58162435A	P/N LABEL FOR MANUAL PE BAG	
	Q40G 20N673 5A	RATING LABEL	
	Q40G0001939 5A	CARTON LABEL	
	040G 45762412B	CBPC LABEL	
CN402	033G3802 6	WAFER	
CN701	033G3802 9	WAFER 9P RIGHT ANELE PITCH	

CN301	033G801930F CH JS	CONNECTOR	
C707	067G 3151014KV	EC 105℃ CAP 100UF M 25V	
C706	067G 3151014KV	EC 105℃ CAP 100UF M 25V	
C305	067G 3151014KV	EC 105℃ CAP 100UF M 25V	
CN101	088G 35315F HD	D-SUB CONN F ATTACHED SCREW	2nd Source
CN101	088G 35315F XH	D-SUB 15PIN VERTICAL CONN WITH SCREW	
CN102	088G 35424F D	DVI 24PIN CONN F ATTACHED SCREW	
X401	093G 2251B	CRYSTAL MXS12.000AC20F-KAB10HC-49/US	
	709G3108 QM001	CONSUMPTIVE ASS'Y	
	055G 2	ALCOHOL	
	055G 23524	WELDING FLUX WITHOUT PB	
	Q55G 100625	TIN STICK_LOW ARGENTUM	
U401	056G 562584	IC NT68667FG/C QFP-128L	
U703	056G 563 52	IC AP1117D33G-13 TO252-3L DIODES	
U107	056G 662 13	IC AZC099-04S SOT23-6L	
U106	056G 662 13	IC AZC099-04S SOT23-6L	
U105	056G 662 13	IC AZC099-04S SOT23-6L	
U104	056G 662 13	IC AZC099-04S SOT23-6L	
U103	056G 662 13	IC AZC099-04S SOT23-6L	
U403	056G1133 56	M24C16-WMN6TP	
Q701	057G 417 12 T	KEC 2N3904S-RTK/PS	
Q302	057G 417 12 T	KEC 2N3904S-RTK/PS	
Q402	057G 417 13 T	KEC 2N3906S-RTK/PS	
Q301	057G 763 1	A03401 SOT23 BY AOS(A1)	
R134	061G0402100	RST CHIPR 10 OHM +-5% 1/16W	
R132	061G0402100	RST CHIPR 10 OHM +-5% 1/16W	
R131	061G0402100	RST CHIPR 10 OHM +-5% 1/16W	
R130	061G0402100	RST CHIPR 10 OHM +-5% 1/16W	
R129	061G0402100	RST CHIPR 10 OHM +-5% 1/16W	
R128	061G0402100	RST CHIPR 10 OHM +-5% 1/16W	
R127	061G0402100	RST CHIPR 10 OHM +-5% 1/16W	
R126	061G0402100	RST CHIPR 10 OHM +-5% 1/16W	
R118	061G0402101	RST CHIPR 100 OHM +-5% 1/16W	
R119	061G0402101	RST CHIPR 100 OHM +-5% 1/16W	
R402	061G0402101	RST CHIPR 100 OHM +-5% 1/16W	
R409	061G0402101	RST CHIPR 100 OHM +-5% 1/16W	
R417	061G0402101	RST CHIPR 100 OHM +-5% 1/16W	
R429	061G0402101	RST CHIPR 100 OHM +-5% 1/16W	
R431	061G0402101	RST CHIPR 100 OHM +-5% 1/16W	
R140	061G0402101	RST CHIPR 100 OHM +-5% 1/16W	
R103	061G0402101	RST CHIPR 100 OHM +-5% 1/16W	
R104	061G0402101	RST CHIPR 100 OHM +-5% 1/16W	
R117	061G0402101	RST CHIPR 100 OHM +-5% 1/16W	
R115	061G0402101	RST CHIPR 100 OHM +-5% 1/16W	
R114	061G0402101	RST CHIPR 100 OHM +-5% 1/16W	
R113	061G0402101	RST CHIPR 100 OHM +-5% 1/16W	
R111	061G0402101	RST CHIPR 100 OHM +-5% 1/16W	
R109	061G0402101	RST CHIPR 100 OHM +-5% 1/16W	
R105	061G0402101	RST CHIPR 100 OHM +-5% 1/16W	
R101	061G0402101	RST CHIPR 100 OHM +-5% 1/16W	
R416	061G0402102	RST CHIPR 1 KOHM +-5% 1/16W	
R415	061G0402102	RST CHIPR 1 KOHM +-5% 1/16W	
R142	061G0402102	RST CHIPR 1 KOHM +-5% 1/16W	
R141	061G0402102	RST CHIPR 1 KOHM +-5% 1/16W	

R139	061G0402102	RST CHIPR 1 KOHM +-5% 1/16W	
R120	061G0402102	RST CHIPR 1 KOHM +-5% 1/16W	
R425	061G0402102	RST CHIPR 1 KOHM +-5% 1/16W	
R706	061G0402102	RST CHIPR 1 KOHM +-5% 1/16W	
R408	061G0402103	RST CHIPR 10 KOHM +-5% 1/16W	
R405	061G0402103	RST CHIPR 10 KOHM +-5% 1/16W	
R414	061G0402103	RST CHIPR 10 KOHM +-5% 1/16W	
R702	061G0402103	RST CHIPR 10 KOHM +-5% 1/16W	
R705	061G0402103	RST CHIPR 10 KOHM +-5% 1/16W	
R403	061G0402103	RST CHIPR 10 KOHM +-5% 1/16W	
R306	061G0402103	RST CHIPR 10 KOHM +-5% 1/16W	
R303	061G0402103	RST CHIPR 10 KOHM +-5% 1/16W	
R462	061G0402105	RST CHIPR 1MOHM +-5% 1/16W	
R418	061G0402121	RST CHIP 120R 1/16W 5%	
R407	061G0402203	RST CHIP 20K 1/16W 5%	
R469	061G0402222	RST CHIPR 2.2 KOHM +-5% 1/16W	
R107	061G0402222	RST CHIPR 2.2 KOHM +-5% 1/16W	
R106	061G0402222	RST CHIPR 2.2 KOHM +-5% 1/16W	
R444	061G0402390 1F	RST CHIPR 3.9KOHM +-1% 1/16W	
R443	061G0402390 1F	RST CHIPR 3.9KOHM +-1% 1/16W	
R401	061G0402470 0F	RST CHIPR 0402 470 OHM +-1% 1/16W	
R110	061G0402471	RST CHIPR 470 OHM +-5% 1/16W	
R704	061G0402472	RST CHIPR 4.7 KOHM +-5% 1/16W	
R137	061G0402472	RST CHIPR 4.7 KOHM +-5% 1/16W	
R138	061G0402472	RST CHIPR 4.7 KOHM +-5% 1/16W	
R143	061G0402472	RST CHIPR 4.7 KOHM +-5% 1/16W	
R144	061G0402472	RST CHIPR 4.7 KOHM +-5% 1/16W	
R440	061G0402472	RST CHIPR 4.7 KOHM +-5% 1/16W	
R441	061G0402472	RST CHIPR 4.7 KOHM +-5% 1/16W	
R307	061G0402473	RST CHIPR 47 KOHM +-5% 1/16W	
R304	061G0402473	RST CHIPR 47 KOHM +-5% 1/16W	
R108	061G0402750	RST CHIPR 75 OHM +-5% 1/16W	
R112	061G0402750	RST CHIPR 75 OHM +-5% 1/16W	
R116	061G0402750	RST CHIPR 75 OHM +-5% 1/16W	
R472	061G0402750	RST CHIPR 75 OHM +-5% 1/16W	
R102	061G0603101	RST CHIPR 100 OHM +-5% 1/10W	
R470	061G0805000	RST CHIP MAX 0R05 1/8W	
R305	061G0805000 F	RST CHIPR 0 OHM +-5% 1/8W FENGHUA	
R420	061G0805103	RST CHIPR 10K OHM +-5% 1/8W	
R301	061G1206331	RST CHIPR 330 OHM +-5% 1/4W	
C107	065G0402102 32	1000PF +-10% 50V X7R	
C306	065G0402104 12	CAP CHIP 0402 0.1UF 16V X7R	
C423	065G0402104 15	MLCC 0402 0.1UF K 16V X5R	
C430	065G0402104 15	MLCC 0402 0.1UF K 16V X5R	
C431	065G0402104 15	MLCC 0402 0.1UF K 16V X5R	
C432	065G0402104 15	MLCC 0402 0.1UF K 16V X5R	
C433	065G0402104 15	MLCC 0402 0.1UF K 16V X5R	
C435	065G0402104 15	MLCC 0402 0.1UF K 16V X5R	
C446	065G0402104 15	MLCC 0402 0.1UF K 16V X5R	
C447	065G0402104 15	MLCC 0402 0.1UF K 16V X5R	
C709	065G0402104 15	MLCC 0402 0.1UF K 16V X5R	
C708	065G0402104 15	MLCC 0402 0.1UF K 16V X5R	
C448	065G0402104 15	MLCC 0402 0.1UF K 16V X5R	
C422	065G0402104 15	MLCC 0402 0.1UF K 16V X5R	

C115	065G0402104 15	MLCC 0402 0.1UF K 16V X5R	
C301	065G0402104 15	MLCC 0402 0.1UF K 16V X5R	
C302	065G0402104 15	MLCC 0402 0.1UF K 16V X5R	
C403	065G0402104 15	MLCC 0402 0.1UF K 16V X5R	
C404	065G0402104 15	MLCC 0402 0.1UF K 16V X5R	
C410	065G0402104 15	MLCC 0402 0.1UF K 16V X5R	
C412	065G0402104 15	MLCC 0402 0.1UF K 16V X5R	
C413	065G0402104 15	MLCC 0402 0.1UF K 16V X5R	
C421	065G0402220 31	CHIP 22PF 50V NPO	
C103	065G0402220 31	CHIP 22PF 50V NPO	
C104	065G0402220 31	CHIP 22PF 50V NPO	
C420	065G0402220 31	CHIP 22PF 50V NPO	
C401	065G0402224 17	CAP CER 0.22UF -20%-80%	
C411	065G0402224 17	CAP CER 0.22UF -20%-80%	
C114	065G0402473 12	CHIP 0.047UF 16V X7R	
C111	065G0402473 12	CHIP 0.047UF 16V X7R	
C110	065G0402473 12	CHIP 0.047UF 16V X7R	
C108	065G0402473 12	CHIP 0.047UF 16V X7R	
C106	065G0402473 12	CHIP 0.047UF 16V X7R	
C102	065G0402473 12	CHIP 0.047UF 16V X7R	
C113	065G0402509 31	CHIP 5PF 50V NPO	
C109	065G0402509 31	CHIP 5PF 50V NPO	
C105	065G0402509 31	CHIP 5PF 50V NPO	
C439	065G060310517T	MLCC 0603 CAP 1UF Z 16V Y5V	
C440	065G060310517T	MLCC 0603 CAP 1UF Z 16V Y5V	
C438	065G0805105 12	1UF +-10% 16V X7R	
FB407	071G 56V301 B	CHIP BEAD FCM2012VF-301T07 BULLWILL	
FB401	071G 56V301 B	CHIP BEAD FCM2012VF-301T07 BULLWILL	
FB404	071G 56V301 B	CHIP BEAD FCM2012VF-301T07 BULLWILL	
FB406	071G 56V301 B	CHIP BEAD FCM2012VF-301T07 BULLWILL	
FB105	071G 59B121	TB160808B	
FB701	071G 59G301	CHIP BEAD 300OHM	
FB101	071G 59K190 B	19 OHM BEAD	
FB102	071G 59K190 B	19 OHM BEAD	
FB103	071G 59K190 B	19 OHM BEAD	
D702	093G 60505	DIO SIG SM BAT54C(PHSE)R	
ZD403	093G 39GA01 T	RLZ5.6B	
ZD104	093G 39GA01 T	RLZ5.6B	
ZD105	093G 39GA01 T	RLZ5.6B	
D701	093G3004 3	SM340A	
	715G3108 1	MAIN PCB FR-4 D/S 67X80MM	
C406	065G0402104 15	MLCC 0402 0.1UF K 16V X5R	
C407	065G0402104 15	MLCC 0402 0.1UF K 16V X5R	
C442	065G0402104 15	MLCC 0402 0.1UF K 16V X5R	
FB403	071G 56V301 B	CHIP BEAD FCM2012VF-301T07 BULLWILL	
U402	056G1133 90 1	IC PM25LV020-100SCE 2MB SOIC-8 PMC	
R419	061G0805121	RST CHIPR 120 OHM +-5% 1/8W	
	709G3108 QS001	CONSUMPTIVE ASS'Y	
	052G 2191 A	PAPER TAPE	
	Q52G6026 6	MESH PRINTTING PAPER	
Q301	057G 763513	P6403FMG BY NIKO-SEM	
Q302	057G 417518	TRA LMBT3904LT1G 200MA/40V SOT-23 LRC	
Q701	057G 417518	TRA LMBT3904LT1G 200MA/40V SOT-23 LRC	
U703	056G 563515	IC AZ1117D-3.3TRG1 1A/3.3V TO-252	

	KEPC8QG9	KEY BOARD	
SW001	077G 600 1 CJ	TACT SWITCH	
SW002	077G 600 1 CJ	TACT SWITCH	
SW004	077G 600 1 CJ	TACT SWITCH	
SW005	077G 600 1 CJ	TACT SWITCH	
SW003	077G610D 1 NA	TACT SW+LED	
SW003	077G610D 1 WB	TACT SW+LED	
CN2	033G8032 3F HR	CONNECTOR 3P 1.25	
CN1	033G8032 4F S HR	CONNECTOR	
R001	061G0603000	RST CHIP MAX 0R05 1/10W	
R004	061G0603102	RST CHIPR 1K OHM +-5% 1/10W	
R002	061G0603202	RST CHIPR 2 KOHM +-5% 1/10W	
R003	061G0603202	RST CHIPR 2 KOHM +-5% 1/10W	
R005	061G0603472	RST CHIPR 4.7K OHM +-5% 1/10W	
R006	061G0603472	RST CHIPR 4.7K OHM +-5% 1/10W	
	715G3331 1	KEY PCB FR-4 113X14.7MM	
Q001	057G 417518	TRA LMBT3904LT1G 200MA/40V SOT-23 LRC	
Q002	057G 417518	TRA LMBT3904LT1G 200MA/40V SOT-23 LRC	
	PWPC8C41MYF2	POWER BOARD G2892-1-7-X-2-090507	
	040G 45762412B	CBPC LABEL	
GND1	009G6005 1	GROUND TERMINAL	
GND2	009G6005 1	GROUND TERMINAL	
CN801	033G8021 2E U	INVERT CONNECTOR	
CN802	033G8021 2E U	INVERT CONNECTOR	
CN803	033G8021 2E U	INVERT CONNECTOR	
CN804	033G8021 2E U	INVERT CONNECTOR	
IC902	056G 139 3A	IC PC123Y22FZ0F	
RT901	061G 58 9T	RST NTCR 10 OHM +-20% 5A THINKING	
C903	063G107K474 6S	CAP X2 0.47UF K 275VAC	
C819	065G 3J5606ET	CAP CER 56PF J 3KV	
C820	065G 3J5606ET	CAP CER 56PF J 3KV	
C821	065G 3J5606ET	CAP CER 56PF J 3KV	
C822	065G 3J5606ET	CAP CER 56PF J 3KV	
C817	065G 6J2096ET	2PF 5% SL 6KV	
C901	065G305M1022EM	Y2 1000PF +-20% 250VAC	
C902	065G305M1022EM	Y2 1000PF +-20% 250VAC	
C900	065G306M3322BP	3300PF 20%	
C804	067G215A1024KV	EC 1000UF 25V 12.5*20MM	
C804	067G215A1024LV	LOW ESR EC 1000UF 25V M 12.5*20MM	
C922	067G215D1026LV	LOW ESR EC 1000UF M 35V 12.5*20MM	
C935	067G215S1024KV	EC 105℃ CAP 1000UF M 25V	
C934	067G215S1024KV	EC 105℃ CAP 1000UF M 25V	
C934	067G215S1024LV	LOW ESR EC 1000UF 25V M 12.5*20MM	
C935	067G215S1024LV	LOW ESR EC 1000UF 25V M 12.5*20MM	
C927	067G215S4713LV	LOW ESR EC 470UF 16V M 10*12.5MM	
C927	067G215V471 3H	CAP L105℃ 470UF M 16V	
C907	067G315Z10115K	EC.100UF 450V 18*40MM	
C907	067G315Z10115L	EC 100UF 450V M 18*40MM	
L801	073G 174 35DNA	FILTER 200MH±25%	
L802	073G 174 35DNA	FILTER 200MH±25%	
L901	073G 174 65 S2	LINE FILTER 30MH MIN	
L921	073G 253 91 L	CHOKE BY LI TA	
L922	073G 253 91 L	CHOKE BY LI TA	
T901	080GL17T 47 H1	X'FMR 530UH	

T901	080GL17T 47 N1	X'FMR 530UH	
T901	080GL17T 47 S1	X'FMR 530UH	
PT801	080GL24T 23 DN	X'FMR 68UH TK.2005Y.101 VOC	
CN901	087G 501 32 S	AC SOCKET	
BD901	093G 50460 28	BRIDGE DIODE KBP208G LITEON	
CN902	095G 825 9D 11	HARNESS 9P(SCN)-10P 100MM	2nd Source
CN902	095G 825 9X 11	HARNESS 9P(SCN)-10P 100MM	
	709G2892 QM001	CONSUMPTIVE ASS'Y	
	055G 2	ALCOHOL	
	055G 23524	WELDING FLUX WITHOUT PB	
	Q55G 100625	TIN STICK_LOW ARGENTUM	
IC801	056G 608 12	IC TA9687GN-A-0-TR SOP-16	
Q805	057G 763 91	ET AO4620 7.2A/30V -5.3A/-30V SOIC-8	
Q806	057G 763 91	ET AO4620 7.2A/30V -5.3A/-30V SOIC-8	
Q802	057G 763904	TRA FET 2N7002 SOT-23 PHILIPS	
R957	061G0603000	RST CHIP MAX 0R05 1/10W	
R845	061G0603103	RST CHIPR 10 KOHM +-5% 1/10W	
R844	061G0603103	RST CHIPR 10 KOHM +-5% 1/10W	
R843	061G0603103	RST CHIPR 10 KOHM +-5% 1/10W	
R842	061G0603103	RST CHIPR 10 KOHM +-5% 1/10W	
R807	061G0603103	RST CHIPR 10 KOHM +-5% 1/10W	
R806	061G0603104	RST CHIPR 100 KOHM +-5% 1/10W	
R813	061G0603104	RST CHIPR 100 KOHM +-5% 1/10W	
R841	061G0603105	RST CHIPR 1M OHM +-5% 1/10W	
R839	061G0603105	RST CHIPR 1M OHM +-5% 1/10W	
R838	061G0603105	RST CHIPR 1M OHM +-5% 1/10W	
R809	061G0603105	RST CHIPR 1M OHM +-5% 1/10W	
R929	061G0603243 1F	RST CHIPR 2.43K OHM +-1% 1/10W	
R924	061G0603365 1F	RST CHIPR 3.65 KOHM +-1% 1/10W	
R808	061G0603390 0F	RST CHIPR 390 OHM +-1% 1/10W	
R926	061G0603432 2F	RST CHIPR 43.2 KOHM +-1% 1/10W	
R836	061G0603563 Y	RST CHIPR 56KOHM +-5% 1/10W YAGEO	
R815	061G0603750 1F	RST CHIPR 7.5 KOHM +-1% 1/10W	
R810	061G0603750 2F	RST CHIPR 75KOHM +-1% 1/10W	
R837	061G0603752	RST CHIPR 7.5 KOHM +-5% 1/10W	
RJ808	061G0805000	RST CHIP MAX 0R05 1/8W	
RJ807	061G0805000	RST CHIP MAX 0R05 1/8W	
RJ806	061G0805000	RST CHIP MAX 0R05 1/8W	
RJ805	061G0805000	RST CHIP MAX 0R05 1/8W	
RJ804	061G0805000	RST CHIP MAX 0R05 1/8W	
RJ803	061G0805000	RST CHIP MAX 0R05 1/8W	
R939	061G0805102	RST CHIPR 1K OHM +-5% 1/8W	
R925	061G0805102	RST CHIPR 1K OHM +-5% 1/8W	
R930	061G0805102	RST CHIPR 1K OHM +-5% 1/8W	
R801	061G0805103	RST CHIPR 10K OHM +-5% 1/8W	
R812	061G0805104	RST CHIPR 100K OHM +-5% 1/8W	
R840	061G0805105	RST CHIPR 1M OHM +-5% 1/8W	
R802	061G0805220	RST CHIPR 22 OHM +-5% 1/8W	
R819	061G0805229	RST CHIP 2R2 1/8W 5%	
R818	061G0805229	RST CHIP 2R2 1/8W 5%	
R817	061G0805229	RST CHIP 2R2 1/8W 5%	
R816	061G0805229	RST CHIP 2R2 1/8W 5%	
R922	061G0805471	RST CHIPR 470 OHM +-5% 1/8W	
R830	061G0805512	RST CHIPR 5.1 KOHM +-5% 1/8W	

R804	061G0805512	RST CHIPR 5.1 KOHM +-5% 1/8W	
R803	061G0805512	RST CHIPR 5.1 KOHM +-5% 1/8W	
R928	061G0805622	RST CHIPR 6.2 KOHM +-5% 1/8W	
R940	061G0805681	RST CHIPR 680 OHM +-5% 1/8W	
R811	061G0805820 2F	RST CHIPR 82KOHM +-1% 1/8W	
R912	061G0805823	RST CHIPR 82 KOHM +-5% 1/8W	
RJ902	061G1206000	RST CHIP MAX 0R05 1/4W	
RJ901	061G1206000	RST CHIP MAX 0R05 1/4W	
RJ815	061G1206000	RST CHIP MAX 0R05 1/4W	
RJ814	061G1206000	RST CHIP MAX 0R05 1/4W	
RJ812	061G1206000	RST CHIP MAX 0R05 1/4W	
RJ811	061G1206000	RST CHIP MAX 0R05 1/4W	
RJ810	061G1206000	RST CHIP MAX 0R05 1/4W	
RJ809	061G1206000	RST CHIP MAX 0R05 1/4W	
RJ801	061G1206000	RST CHIP MAX 0R05 1/4W	
R910	061G1206000	RST CHIP MAX 0R05 1/4W	
R932	061G1206000 4	RST CHIP MAX 0R05 1/4W	
RJ903	061G1206000 7	RST CHIP MAX 0R05 1/4W	
R956	061G1206101	RST CHIPR 100 OHM +-5% 1/4W	
R955	061G1206101	RST CHIPR 100 OHM +-5% 1/4W	
R954	061G1206101	RST CHIPR 100 OHM +-5% 1/4W	
R953	061G1206101	RST CHIPR 100 OHM +-5% 1/4W	
R952	061G1206101	RST CHIPR 100 OHM +-5% 1/4W	
R951	061G1206101	RST CHIPR 100 OHM +-5% 1/4W	
R902	061G1206684	RST CHIPR 680K OHM +-5% 1/4W	
R901	061G1206684	RST CHIPR 680K OHM +-5% 1/4W	
R900	061G1206684	RST CHIPR 680K OHM +-5% 1/4W	
C932	065G0603102 32	1000PF +-10% 50V X7R	
C926	065G0603104 12	CER2 0603 X7R 16V 100N P	
C814	065G0603221 31	CER1 0603 NP0 50V 220P P	
C810	065G0603222 32	CHIP 2200PF 50V X7R	
C805	065G0603333 32	CHIP 0.033UF 50V X7R 0603	
C808	065G0603333 32	CHIP 0.033UF 50V X7R 0603	
C914	065G0805102 32	CHIP 1000P 50VX7R 0805	
C915	065G0805103 32	CAP CHIP 0805 10NF K 50V X7R	
C811	065G0805104 32	CAP CHIP 0805 0.1UF K 50V X7R	
C815	065G0805104 32	CAP CHIP 0805 0.1UF K 50V X7R	
C912	065G0805104 32	CAP CHIP 0805 0.1UF K 50V X7R	
C818	065G0805155A2K T	CAP CHIP 0805 1.5UF K 10V X7R	
C809	065G0805221 31	CAP CHIP 0805 220PF J 50V NPO	
C928	065G0805224 32	0.22UF,K,50V,X7R	
C933	065G080522512K T	CAP CHIP 0805 2.2UF K 16V X7R	
C806	065G080522512K T	CAP CHIP 0805 2.2UF K 16V X7R	
C802	065G0805473 32	CHIP 0.047UF 50V X7R	
C801	065G0805473 32	CHIP 0.047UF 50V X7R	
C803	065G1206104 32	CHIP 0.1UF 25V X7R 1206	
C920	065G1206222 72	MLCC 1206 2200PF K 500V X7R	
C921	065G1206222 72	MLCC 1206 2200PF K 500V X7R	
C923	065G1206222 72	MLCC 1206 2200PF K 500V X7R	
C924	065G1206222 72	MLCC 1206 2200PF K 500V X7R	
D803	093G 64 33	DIO SIG SM BAV99 (PHSE)R	
D808	093G 64 42 PP	BAV70 SOT-23	
D807	093G 64 42 PP	BAV70 SOT-23	
D806	093G 64 42 PP	BAV70 SOT-23	

ZD802	093G 39S 24 T	RLZ 5.6B LLDS	
ZD803	093G 39S 24 T	RLZ 5.6B LLDS	
CN901	006G 31500	EYELET	
IC903	056G 158 12	KIA431A-AT/P TO-92	
Q902	057G 761 16	TRA KTD1028 KEC	
R909	061G152M10452T	RST MOFR 100KOHM +-5% 2WS	
R958	061G152M25152T	RST MOFR 250 OHM +-5% 2WS	
R916	061G152M47852T	RST MOFR 0.47 OHM +-5% 2WS	
R828	061G212Y62552T SY	RST MGFR 6.2MOHM +-5% 1/2W FUTABA	
C913	065G 1K101 2T6921	CAP CER 100PF 1KV K Y5P	
C910	065G 2K152 2T6921	CAP CER 1500PF K 2KV Y5P	
C911	067G 2152207NT	KY50VB22M-TP5 5*11	
FB902	071G 55 9 T	FERRITE BEAD	
FB901	071G 55 29	FERRITE BEAD	
F901	084G 56 4 B	FUSE 4A 250V	
F902	084G 56 4 B	FUSE 4A 250V	
ZD901	093G 3952152T	TZX18B	
D900	093G 6026T52T	RECTIFIER DIODE FR107	
D901	093G 6038T52T	FR103	
D801	093G 64 1152T	1N4148	
J820	095G 90 23	JUMPER WIRE	
J821	095G 90 23	JUMPER WIRE	
J822	095G 90 23	JUMPER WIRE	
J823	095G 90 23	JUMPER WIRE	
J901	095G 90 23	JUMPER WIRE	
J902	095G 90 23	JUMPER WIRE	
J904	095G 90 23	JUMPER WIRE	
J907	095G 90 23	JUMPER WIRE	
J909	095G 90 23	JUMPER WIRE	
J910	095G 90 23	JUMPER WIRE	
J921	095G 90 23	JUMPER WIRE	
J922	095G 90 23	JUMPER WIRE	
J923	095G 90 23	JUMPER WIRE	
J819	095G 90 23	JUMPER WIRE	
J817	095G 90 23	JUMPER WIRE	
J816	095G 90 23	JUMPER WIRE	
J815	095G 90 23	JUMPER WIRE	
J810	095G 90 23	JUMPER WIRE	
	715G2892 3 7	POWER PCB 184X122X1.6MM FR-1 S/S 1OZ	
C911	067G 2152207RT	LOW E.S.R 22UF +/-20% 50V	
	709G2892 QA001	CONSUMPTIVE ASS'Y	
	095G 90 23	JUMPER WIRE	
	709G2892 QS001	CONSUMPTIVE ASS'Y	
	052G 2191 A	PAPER TAPE	
RJ904	061G1206000 7	RST CHIP MAX 0R05 1/4W	
RJ905	061G1206000 7	RST CHIP MAX 0R05 1/4W	
RJ906	061G1206000 7	RST CHIP MAX 0R05 1/4W	
	705GQ851001	OIL FOR DISAPPEAR ASS'Y	
	705GQ856018	IC901 ASS'Y	
IC901	056G 379510	C STR-W6253D-LF NO.2012 10A TO-220-6F	
	AM1G1730 8120	SCREW	
HS1	Q90G0182 1	HEAT SINK	
	705GQ893074	D920/D921 ASS'Y	
D920	093G 60239	FME-210B T0-220	

D921	093G1506 2	FMW-2156	
	AM1G1730 8120	SCREW	
HS2	Q90G6264 5	HEAT SINK	
	705GQ934033	20" LCD STAND -BASE ASS'Y	
	AM1G1740 12 47 CR3	SCREW	
	Q12G6600 6	FOOT	
	Q34G0518AED 1B0100	STAND	
	Q34G0523AED 1B0130	BASE	
	Q37G0115013	HINGE	

TA9SNDNYHWE1HN

点位	组件	对象描述	备注
	040G 58162461A	EPA LABEL	
	052G 1186	SMALL TAPE	
	052G 1207 A	CONDUCTIVE TAPE 45MM *25MM *0.08MM	
	052G 1211 B	CONDUCTIVE TAPE 85MM *40MM *0.09MM	
	052G 2191 A	PAPER TAPE	
	052G6019 1	INSULATING TAPE	
	070GHDCP500HDC	HDCP CODE	
E08903	089G1745CAA AC	DVI CABLE	2nd Source
E08903	089G1745HAA AC	DVI CABLE	
	089G179J30N 9C	FFC CABLE	
E08901	089G414A15N IS	POWER CORD	
E08901	089G414A15N YH	POWER CORD	2nd Source
E09502	095G8014 6DH60	HARNESS 6P-4P(A1253HA HR)+3P(A1253HA HR)	
E09502	095G8014 6XH60	HARNESS 6P-4P(A1253HA HR)+3P(A1253HA HR)	2nd Source
	0M1G 130 6120	SCREW M3X6	
	0M1G1730 6120	SCREW,42-D020523	
	0Q1G 930 5120	SCREW	
	705GQ934033	20" LCD STAND -BASE ASS'Y	
	AM1G1740 12 47 CR3	SCREW	
	Q12G6600 6	FOOT	
	Q34G0518AED 1B0100	STAND	
	Q34G0523AED 1B0130	BASE	
	Q37G0115013	HINGE	
E750	750GLS200KT112N000	PANEL LTM200KT01 A02(V02,002) SZ SEC	
	756GQ9CB AA017	MAIN BOARD-CBPCRND1QF	
SMTCR-U402	100GANSAA000N11	MCU ASS'Y-056G1133 90 1	
	AM1G1740 12 47 CR3	SCREW	
	040G 45762412B	CBPC LABEL	
CN402	033G3802 6	WAFER	
CN701	033G3802 9	WAFER 9P RIGHT ANELE PITCH	
CN301	033G801930F CH JS	CONNECTOR	
C305	067G 3151014KV	EC 105℃ CAP 100UF M 25V	
C707	067G 3151014KV	EC 105℃ CAP 100UF M 25V	
C706	067G 3151014KV	EC 105℃ CAP 100UF M 25V	
CN101	088G 35315F HD	D-SUB CONN F ATTACHED SCREW	2nd Source
CN101	088G 35315F XH	D-SUB 15PIN VERTICAL CONN WITH SCREW	
CN102	088G 35424F D	DVI 24PIN CONN F ATTACHED SCREW	
X401	093G 2251B	CRYSTAL MXS12.000AC20F-KAB10HC-49/US	
	709G3108 QM001	CONSUMPTIVE ASS'Y	
	055G 2	ALCOHOL	
	055G 23524	WELDING FLUX WITHOUT PB	
	Q55G 100625	TIN STICK_LOW ARGENTUM	
U401	056G 562584	IC NT68667FG/C QFP-128L	
U703	056G 563 52	IC AP1117D33G-13 TO252-3L DIODES	
U107	056G 662 13	IC AZC099-04S SOT23-6L	
U106	056G 662 13	IC AZC099-04S SOT23-6L	
U105	056G 662 13	IC AZC099-04S SOT23-6L	
U104	056G 662 13	IC AZC099-04S SOT23-6L	
U103	056G 662 13	IC AZC099-04S SOT23-6L	
U403	056G1133 56	M24C16-WMN6TP	
Q302	057G 417 12 T	KEC 2N3904S-RTK/PS	

Q701	057G 417 12 T	KEC 2N3904S-RTK/PS	
Q402	057G 417 13 T	KEC 2N3906S-RTK/PS	
Q301	057G 763 1	A03401 SOT23 BY AOS(A1)	
R126	061G0402100	RST CHIPR 10 OHM +-5% 1/16W	
R127	061G0402100	RST CHIPR 10 OHM +-5% 1/16W	
R128	061G0402100	RST CHIPR 10 OHM +-5% 1/16W	
R129	061G0402100	RST CHIPR 10 OHM +-5% 1/16W	
R130	061G0402100	RST CHIPR 10 OHM +-5% 1/16W	
R131	061G0402100	RST CHIPR 10 OHM +-5% 1/16W	
R132	061G0402100	RST CHIPR 10 OHM +-5% 1/16W	
R134	061G0402100	RST CHIPR 10 OHM +-5% 1/16W	
R119	061G0402101	RST CHIPR 100 OHM +-5% 1/16W	
R118	061G0402101	RST CHIPR 100 OHM +-5% 1/16W	
R117	061G0402101	RST CHIPR 100 OHM +-5% 1/16W	
R115	061G0402101	RST CHIPR 100 OHM +-5% 1/16W	
R114	061G0402101	RST CHIPR 100 OHM +-5% 1/16W	
R113	061G0402101	RST CHIPR 100 OHM +-5% 1/16W	
R111	061G0402101	RST CHIPR 100 OHM +-5% 1/16W	
R109	061G0402101	RST CHIPR 100 OHM +-5% 1/16W	
R105	061G0402101	RST CHIPR 100 OHM +-5% 1/16W	
R101	061G0402101	RST CHIPR 100 OHM +-5% 1/16W	
R104	061G0402101	RST CHIPR 100 OHM +-5% 1/16W	
R103	061G0402101	RST CHIPR 100 OHM +-5% 1/16W	
R140	061G0402101	RST CHIPR 100 OHM +-5% 1/16W	
R431	061G0402101	RST CHIPR 100 OHM +-5% 1/16W	
R429	061G0402101	RST CHIPR 100 OHM +-5% 1/16W	
R417	061G0402101	RST CHIPR 100 OHM +-5% 1/16W	
R409	061G0402101	RST CHIPR 100 OHM +-5% 1/16W	
R402	061G0402101	RST CHIPR 100 OHM +-5% 1/16W	
R120	061G0402102	RST CHIPR 1 KOHM +-5% 1/16W	
R706	061G0402102	RST CHIPR 1 KOHM +-5% 1/16W	
R425	061G0402102	RST CHIPR 1 KOHM +-5% 1/16W	
R416	061G0402102	RST CHIPR 1 KOHM +-5% 1/16W	
R415	061G0402102	RST CHIPR 1 KOHM +-5% 1/16W	
R142	061G0402102	RST CHIPR 1 KOHM +-5% 1/16W	
R141	061G0402102	RST CHIPR 1 KOHM +-5% 1/16W	
R139	061G0402102	RST CHIPR 1 KOHM +-5% 1/16W	
R705	061G0402103	RST CHIPR 10 KOHM +-5% 1/16W	
R702	061G0402103	RST CHIPR 10 KOHM +-5% 1/16W	
R414	061G0402103	RST CHIPR 10 KOHM +-5% 1/16W	
R408	061G0402103	RST CHIPR 10 KOHM +-5% 1/16W	
R405	061G0402103	RST CHIPR 10 KOHM +-5% 1/16W	
R403	061G0402103	RST CHIPR 10 KOHM +-5% 1/16W	
R306	061G0402103	RST CHIPR 10 KOHM +-5% 1/16W	
R303	061G0402103	RST CHIPR 10 KOHM +-5% 1/16W	
R462	061G0402105	RST CHIPR 1MOHM +-5% 1/16W	
R418	061G0402121	RST CHIP 120R 1/16W 5%	
R407	061G0402203	RST CHIP 20K 1/16W 5%	
R106	061G0402222	RST CHIPR 2.2 KOHM +-5% 1/16W	
R107	061G0402222	RST CHIPR 2.2 KOHM +-5% 1/16W	
R469	061G0402222	RST CHIPR 2.2 KOHM +-5% 1/16W	
R443	061G0402390 1F	RST CHIPR 3.9KOHM +-1% 1/16W	
R444	061G0402390 1F	RST CHIPR 3.9KOHM +-1% 1/16W	
R401	061G0402470 0F	RST CHIPR 0402 470 OHM +-1% 1/16W	

R110	061G0402471	RST CHIPR 470 OHM +-5% 1/16W	
R440	061G0402472	RST CHIPR 4.7 KOHM +-5% 1/16W	
R144	061G0402472	RST CHIPR 4.7 KOHM +-5% 1/16W	
R143	061G0402472	RST CHIPR 4.7 KOHM +-5% 1/16W	
R138	061G0402472	RST CHIPR 4.7 KOHM +-5% 1/16W	
R137	061G0402472	RST CHIPR 4.7 KOHM +-5% 1/16W	
R441	061G0402472	RST CHIPR 4.7 KOHM +-5% 1/16W	
R704	061G0402472	RST CHIPR 4.7 KOHM +-5% 1/16W	
R307	061G0402473	RST CHIPR 47 KOHM +-5% 1/16W	
R304	061G0402473	RST CHIPR 47 KOHM +-5% 1/16W	
R108	061G0402750	RST CHIPR 75 OHM +-5% 1/16W	
R112	061G0402750	RST CHIPR 75 OHM +-5% 1/16W	
R116	061G0402750	RST CHIPR 75 OHM +-5% 1/16W	
R472	061G0402750	RST CHIPR 75 OHM +-5% 1/16W	
R102	061G0603101	RST CHIPR 100 OHM +-5% 1/10W	
R470	061G0805000	RST CHIP MAX 0R05 1/8W	
R305	061G0805000 F	RST CHIPR 0 OHM +-5% 1/8W FENGHUA	
R420	061G0805103	RST CHIPR 10K OHM +-5% 1/8W	
R301	061G1206331	RST CHIPR 330 OHM +-5% 1/4W	
C107	065G0402102 32	1000PF +-10% 50V X7R	
C306	065G0402104 12	CAP CHIP 0402 0.1UF 16V X7R	
C430	065G0402104 15	MLCC 0402 0.1UF K 16V X5R	
C431	065G0402104 15	MLCC 0402 0.1UF K 16V X5R	
C432	065G0402104 15	MLCC 0402 0.1UF K 16V X5R	
C433	065G0402104 15	MLCC 0402 0.1UF K 16V X5R	
C435	065G0402104 15	MLCC 0402 0.1UF K 16V X5R	
C446	065G0402104 15	MLCC 0402 0.1UF K 16V X5R	
C447	065G0402104 15	MLCC 0402 0.1UF K 16V X5R	
C448	065G0402104 15	MLCC 0402 0.1UF K 16V X5R	
C708	065G0402104 15	MLCC 0402 0.1UF K 16V X5R	
C709	065G0402104 15	MLCC 0402 0.1UF K 16V X5R	
C423	065G0402104 15	MLCC 0402 0.1UF K 16V X5R	
C422	065G0402104 15	MLCC 0402 0.1UF K 16V X5R	
C413	065G0402104 15	MLCC 0402 0.1UF K 16V X5R	
C412	065G0402104 15	MLCC 0402 0.1UF K 16V X5R	
C410	065G0402104 15	MLCC 0402 0.1UF K 16V X5R	
C404	065G0402104 15	MLCC 0402 0.1UF K 16V X5R	
C403	065G0402104 15	MLCC 0402 0.1UF K 16V X5R	
C302	065G0402104 15	MLCC 0402 0.1UF K 16V X5R	
C301	065G0402104 15	MLCC 0402 0.1UF K 16V X5R	
C115	065G0402104 15	MLCC 0402 0.1UF K 16V X5R	
C421	065G0402220 31	CHIP 22PF 50V NPO	
C420	065G0402220 31	CHIP 22PF 50V NPO	
C104	065G0402220 31	CHIP 22PF 50V NPO	
C103	065G0402220 31	CHIP 22PF 50V NPO	
C411	065G0402224 17	CAP CER 0.22UF -20%-80%	
C401	065G0402224 17	CAP CER 0.22UF -20%-80%	
C114	065G0402473 12	CHIP 0.047UF 16V X7R	
C111	065G0402473 12	CHIP 0.047UF 16V X7R	
C110	065G0402473 12	CHIP 0.047UF 16V X7R	
C108	065G0402473 12	CHIP 0.047UF 16V X7R	
C106	065G0402473 12	CHIP 0.047UF 16V X7R	
C102	065G0402473 12	CHIP 0.047UF 16V X7R	
C113	065G0402509 31	CHIP 5PF 50V NPO	

C109	065G0402509 31	CHIP 5PF 50V NPO	
C105	065G0402509 31	CHIP 5PF 50V NPO	
C440	065G060310517T	MLCC 0603 CAP 1UF Z 16V Y5V	
C439	065G060310517T	MLCC 0603 CAP 1UF Z 16V Y5V	
C438	065G0805105 12	1UF +-10% 16V X7R	
FB407	071G 56V301 B	CHIP BEAD FCM2012VF-301T07 BULLWILL	
FB406	071G 56V301 B	CHIP BEAD FCM2012VF-301T07 BULLWILL	
FB404	071G 56V301 B	CHIP BEAD FCM2012VF-301T07 BULLWILL	
FB401	071G 56V301 B	CHIP BEAD FCM2012VF-301T07 BULLWILL	
FB105	071G 59B121	TB160808B	
FB701	071G 59G301	CHIP BEAD 300OHM	
FB101	071G 59K190 B	19 OHM BEAD	
FB102	071G 59K190 B	19 OHM BEAD	
FB103	071G 59K190 B	19 OHM BEAD	
D702	093G 60505	DIO SIG SM BAT54C(PHSE)R	
ZD105	093G 39GA01 T	RLZ5.6B	
ZD104	093G 39GA01 T	RLZ5.6B	
ZD403	093G 39GA01 T	RLZ5.6B	
D701	093G3004 3	SM340A	
	715G3108 1	MAIN PCB FR-4 D/S 67X80MM	
C406	065G0402104 15	MLCC 0402 0.1UF K 16V X5R	
C407	065G0402104 15	MLCC 0402 0.1UF K 16V X5R	
C442	065G0402104 15	MLCC 0402 0.1UF K 16V X5R	
FB403	071G 56V301 B	CHIP BEAD FCM2012VF-301T07 BULLWILL	
U402	056G1133 90 1	IC PM25LV020-100SCE 2MB SOIC-8 PMC	
R419	061G0805121	RST CHIPR 120 OHM +-5% 1/8W	
	709G3108 QS001	CONSUMPTIVE ASS'Y	
	052G 2191 A	PAPER TAPE	
	Q52G6026 6	MESH PRINTTING PAPER	
Q301	057G 763513	P6403FMG BY NIKO-SEM	
Q302	057G 417518	TRA LMBT3904LT1G 200MA/40V SOT-23 LRC	
Q701	057G 417518	TRA LMBT3904LT1G 200MA/40V SOT-23 LRC	
U703	056G 563515	IC AZ1117D-3.3TRG1 1A/3.3V TO-252	
	KEPC8QG9	KEY BOARD	
SW001	077G 600 1 CJ	TACT SWITCH	
SW004	077G 600 1 CJ	TACT SWITCH	
SW005	077G 600 1 CJ	TACT SWITCH	
SW002	077G 600 1 CJ	TACT SWITCH	
SW003	077G610D 1 NA	TACT SW+LED	
SW003	077G610D 1 WB	TACT SW+LED	
CN2	033G8032 3F HR	CONNECTOR 3P 1.25	
CN1	033G8032 4F S HR	CONNECTOR	
R001	061G0603000	RST CHIP MAX 0R05 1/10W	
R004	061G0603102	RST CHIPR 1K OHM +-5% 1/10W	
R003	061G0603202	RST CHIPR 2 KOHM +-5% 1/10W	
R002	061G0603202	RST CHIPR 2 KOHM +-5% 1/10W	
R005	061G0603472	RST CHIPR 4.7K OHM +-5% 1/10W	
R006	061G0603472	RST CHIPR 4.7K OHM +-5% 1/10W	
	715G3331 1	KEY PCB FR-4 113X14.7MM	
Q001	057G 417518	TRA LMBT3904LT1G 200MA/40V SOT-23 LRC	
Q002	057G 417518	TRA LMBT3904LT1G 200MA/40V SOT-23 LRC	
	PWPC8C41MYF2	POWER BOARD G2892-1-7-X-2-090507	
	040G 45762412B	CBPC LABEL	
GND2	009G6005 1	GROUND TERMINAL	

GND1	009G6005 1	GROUND TERMINAL	
CN804	033G8021 2E U	INVERT CONNECTOR	
CN803	033G8021 2E U	INVERT CONNECTOR	
CN802	033G8021 2E U	INVERT CONNECTOR	
CN801	033G8021 2E U	INVERT CONNECTOR	
IC902	056G 139 3A	IC PC123Y22FZ0F	
RT901	061G 58 9T	RST NTCR 10 OHM +-20% 5A THINKING	
C903	063G107K474 6S	CAP X2 0.47UF K 275VAC	
C822	065G 3J5606ET	CAP CER 56PF J 3KV	
C821	065G 3J5606ET	CAP CER 56PF J 3KV	
C820	065G 3J5606ET	CAP CER 56PF J 3KV	
C819	065G 3J5606ET	CAP CER 56PF J 3KV	
C817	065G 6J2096ET	2PF 5% SL 6KV	
C902	065G305M1022EM	Y2 1000PF +-20% 250VAC	
C901	065G305M1022EM	Y2 1000PF +-20% 250VAC	
C900	065G306M3322BP	3300PF 20%	
C804	067G215A1024KV	EC 1000UF 25V 12.5*20MM	
C804	067G215A1024LV	LOW ESR EC 1000UF 25V M 12.5*20MM	
C922	067G215D1026LV	LOW ESR EC 1000UF M 35V 12.5*20MM	
C935	067G215S1024KV	EC 105°C CAP 1000UF M 25V	
C934	067G215S1024KV	EC 105°C CAP 1000UF M 25V	
C934	067G215S1024LV	LOW ESR EC 1000UF 25V M 12.5*20MM	
C935	067G215S1024LV	LOW ESR EC 1000UF 25V M 12.5*20MM	
C927	067G215S4713LV	LOW ESR EC 470UF 16V M 10*12.5MM	
C927	067G215V471 3H	CAP L105°C 470UF M 16V	
C907	067G315Z10115K	EC.100UF 450V 18*40MM	
C907	067G315Z10115L	EC 100UF 450V M 18*40MM	
L802	073G 174 35DNA	FILTER 200MH±25%	
L801	073G 174 35DNA	FILTER 200MH±25%	
L901	073G 174 65 S2	LINE FILTER 30MH MIN	
L922	073G 253 91 L	CHOKE BY LI TA	
L921	073G 253 91 L	CHOKE BY LI TA	
T901	080GL17T 47 H1	X'FMR 530UH	
T901	080GL17T 47 N1	X'FMR 530UH	
T901	080GL17T 47 S1	X'FMR 530UH	
PT801	080GL24T 23 DN	X'FMR 68UH TK.2005Y.101 VOC	
CN901	087G 501 32 S	AC SOCKET	
BD901	093G 50460 28	BRIDGE DIODE KBP208G LITEON	
CN902	095G 825 9D 11	HARNESS 9P(SCN)-10P 100MM	2nd Source
CN902	095G 825 9X 11	HARNESS 9P(SCN)-10P 100MM	
	709G2892 QM001	CONSUMPTIVE ASS'Y	
	055G 2	ALCOHOL	
	055G 23524	WELDING FLUX WITHOUT PB	
	Q55G 100625	TIN STICK_LOW ARGENTUM	
IC801	056G 608 12	IC TA9687GN-A-0-TR SOP-16	
Q805	057G 763 91	ET AO4620 7.2A/30V -5.3A/-30V SOIC-8	
Q806	057G 763 91	ET AO4620 7.2A/30V -5.3A/-30V SOIC-8	
Q802	057G 763904	TRA FET 2N7002 SOT-23 PHILIPS	
R957	061G0603000	RST CHIP MAX 0R05 1/10W	
R845	061G0603103	RST CHIPR 10 KOHM +-5% 1/10W	
R844	061G0603103	RST CHIPR 10 KOHM +-5% 1/10W	
R843	061G0603103	RST CHIPR 10 KOHM +-5% 1/10W	
R842	061G0603103	RST CHIPR 10 KOHM +-5% 1/10W	
R807	061G0603103	RST CHIPR 10 KOHM +-5% 1/10W	

R806	061G0603104	RST CHIPR 100 KOHM +-5% 1/10W	
R813	061G0603104	RST CHIPR 100 KOHM +-5% 1/10W	
R809	061G0603105	RST CHIPR 1M OHM +-5% 1/10W	
R838	061G0603105	RST CHIPR 1M OHM +-5% 1/10W	
R839	061G0603105	RST CHIPR 1M OHM +-5% 1/10W	
R841	061G0603105	RST CHIPR 1M OHM +-5% 1/10W	
R929	061G0603243 1F	RST CHIPR 2.43K OHM +-1% 1/10W	
R924	061G0603365 1F	RST CHIPR 3.65 KOHM +-1% 1/10W	
R808	061G0603390 0F	RST CHIPR 390 OHM +-1% 1/10W	
R926	061G0603432 2F	RST CHIPR 43.2 KOHM +-1% 1/10W	
R836	061G0603563 Y	RST CHIPR 56KOHM +-5% 1/10W YAGEO	
R815	061G0603750 1F	RST CHIPR 7.5 KOHM +-1% 1/10W	
R810	061G0603750 2F	RST CHIPR 75KOHM +-1% 1/10W	
R837	061G0603752	RST CHIPR 7.5 KOHM +-5% 1/10W	
RJ808	061G0805000	RST CHIP MAX 0R05 1/8W	
RJ807	061G0805000	RST CHIP MAX 0R05 1/8W	
RJ806	061G0805000	RST CHIP MAX 0R05 1/8W	
RJ805	061G0805000	RST CHIP MAX 0R05 1/8W	
RJ804	061G0805000	RST CHIP MAX 0R05 1/8W	
RJ803	061G0805000	RST CHIP MAX 0R05 1/8W	
R925	061G0805102	RST CHIPR 1K OHM +-5% 1/8W	
R930	061G0805102	RST CHIPR 1K OHM +-5% 1/8W	
R939	061G0805102	RST CHIPR 1K OHM +-5% 1/8W	
R801	061G0805103	RST CHIPR 10K OHM +-5% 1/8W	
R812	061G0805104	RST CHIPR 100K OHM +-5% 1/8W	
R840	061G0805105	RST CHIPR 1M OHM +-5% 1/8W	
R802	061G0805220	RST CHIPR 22 OHM +-5% 1/8W	
R819	061G0805229	RST CHIP 2R2 1/8W 5%	
R818	061G0805229	RST CHIP 2R2 1/8W 5%	
R817	061G0805229	RST CHIP 2R2 1/8W 5%	
R816	061G0805229	RST CHIP 2R2 1/8W 5%	
R922	061G0805471	RST CHIPR 470 OHM +-5% 1/8W	
R803	061G0805512	RST CHIPR 5.1 KOHM +-5% 1/8W	
R804	061G0805512	RST CHIPR 5.1 KOHM +-5% 1/8W	
R830	061G0805512	RST CHIPR 5.1 KOHM +-5% 1/8W	
R928	061G0805622	RST CHIPR 6.2 KOHM +-5% 1/8W	
R940	061G0805681	RST CHIPR 680 OHM +-5% 1/8W	
R811	061G0805820 2F	RST CHIPR 82KOHM +-1% 1/8W	
R912	061G0805823	RST CHIPR 82 KOHM +-5% 1/8W	
RJ902	061G1206000	RST CHIP MAX 0R05 1/4W	
RJ901	061G1206000	RST CHIP MAX 0R05 1/4W	
RJ815	061G1206000	RST CHIP MAX 0R05 1/4W	
RJ814	061G1206000	RST CHIP MAX 0R05 1/4W	
RJ812	061G1206000	RST CHIP MAX 0R05 1/4W	
RJ811	061G1206000	RST CHIP MAX 0R05 1/4W	
RJ810	061G1206000	RST CHIP MAX 0R05 1/4W	
RJ809	061G1206000	RST CHIP MAX 0R05 1/4W	
RJ801	061G1206000	RST CHIP MAX 0R05 1/4W	
R910	061G1206000	RST CHIP MAX 0R05 1/4W	
R932	061G1206000 4	RST CHIP MAX 0R05 1/4W	
RJ903	061G1206000 7	RST CHIP MAX 0R05 1/4W	
R956	061G1206101	RST CHIPR 100 OHM +-5% 1/4W	
R955	061G1206101	RST CHIPR 100 OHM +-5% 1/4W	
R954	061G1206101	RST CHIPR 100 OHM +-5% 1/4W	

R953	061G1206101	RST CHIPR 100 OHM +-5% 1/4W	
R952	061G1206101	RST CHIPR 100 OHM +-5% 1/4W	
R951	061G1206101	RST CHIPR 100 OHM +-5% 1/4W	
R902	061G1206684	RST CHIPR 680K OHM +-5% 1/4W	
R901	061G1206684	RST CHIPR 680K OHM +-5% 1/4W	
R900	061G1206684	RST CHIPR 680K OHM +-5% 1/4W	
C932	065G0603102 32	1000PF +-10% 50V X7R	
C926	065G0603104 12	CER2 0603 X7R 16V 100N P	
C814	065G0603221 31	CER1 0603 NP0 50V 220P P	
C810	065G0603222 32	CHIP 2200PF 50V X7R	
C808	065G0603333 32	CHIP 0.033UF 50V X7R 0603	
C805	065G0603333 32	CHIP 0.033UF 50V X7R 0603	
C914	065G0805102 32	CHIP 1000P 50VX7R 0805	
C915	065G0805103 32	CAP CHIP 0805 10NF K 50V X7R	
C912	065G0805104 32	CAP CHIP 0805 0.1UF K 50V X7R	
C815	065G0805104 32	CAP CHIP 0805 0.1UF K 50V X7R	
C811	065G0805104 32	CAP CHIP 0805 0.1UF K 50V X7R	
C818	065G0805155A2K T	CAP CHIP 0805 1.5UF K 10V X7R	
C809	065G0805221 31	CAP CHIP 0805 220PF J 50V NPO	
C928	065G0805224 32	0.22UF,K,50V,X7R	
C806	065G080522512K T	CAP CHIP 0805 2.2UF K 16V X7R	
C933	065G080522512K T	CAP CHIP 0805 2.2UF K 16V X7R	
C801	065G0805473 32	CHIP 0.047UF 50V X7R	
C802	065G0805473 32	CHIP 0.047UF 50V X7R	
C803	065G1206104 32	CHIP 0.1UF 25V X7R 1206	
C920	065G1206222 72	MLCC 1206 2200PF K 500V X7R	
C921	065G1206222 72	MLCC 1206 2200PF K 500V X7R	
C923	065G1206222 72	MLCC 1206 2200PF K 500V X7R	
C924	065G1206222 72	MLCC 1206 2200PF K 500V X7R	
D803	093G 64 33	DIO SIG SM BAV99 (PHSE)R	
D808	093G 64 42 PP	BAV70 SOT-23	
D807	093G 64 42 PP	BAV70 SOT-23	
D806	093G 64 42 PP	BAV70 SOT-23	
ZD802	093G 39S 24 T	RLZ 5.6B LLDS	
ZD803	093G 39S 24 T	RLZ 5.6B LLDS	
CN901	006G 31500	EYELET	
IC903	056G 158 12	KIA431A-AT/P TO-92	
Q902	057G 761 16	TRA KTD1028 KEC	
R909	061G152M10452T	RST MOFR 100KOHM +-5% 2WS	
R958	061G152M25152T	RST MOFR 250 OHM +-5% 2WS	
R916	061G152M47852T	RST MOFR 0.47 OHM +-5% 2WS	
R828	061G212Y62552T SY	RST MGFR 6.2MOHM +-5% 1/2W FUTABA	
C913	065G 1K101 2T6921	CAP CER 100PF 1KV K Y5P	
C910	065G 2K152 2T6921	CAP CER 1500PF K 2KV Y5P	
C911	067G 2152207NT	KY50VB22M-TP5 5*11	
FB902	071G 55 9 T	FERRITE BEAD	
FB901	071G 55 29	FERRITE BEAD	
F901	084G 56 4 B	FUSE 4A 250V	
F902	084G 56 4 B	FUSE 4A 250V	
ZD901	093G 3952152T	TZX18B	
D900	093G 6026T52T	RECTIFIER DIODE FR107	
D901	093G 6038T52T	FR103	
D801	093G 64 1152T	1N4148	
J810	095G 90 23	JUMPER WIRE	

J815	095G 90 23	JUMPER WIRE	
J923	095G 90 23	JUMPER WIRE	
J922	095G 90 23	JUMPER WIRE	
J921	095G 90 23	JUMPER WIRE	
J910	095G 90 23	JUMPER WIRE	
J909	095G 90 23	JUMPER WIRE	
J907	095G 90 23	JUMPER WIRE	
J904	095G 90 23	JUMPER WIRE	
J902	095G 90 23	JUMPER WIRE	
J901	095G 90 23	JUMPER WIRE	
J823	095G 90 23	JUMPER WIRE	
J822	095G 90 23	JUMPER WIRE	
J821	095G 90 23	JUMPER WIRE	
J820	095G 90 23	JUMPER WIRE	
J819	095G 90 23	JUMPER WIRE	
J817	095G 90 23	JUMPER WIRE	
J816	095G 90 23	JUMPER WIRE	
	715G2892 3 7	POWER PCB 184X122X1.6MM FR-1 S/S 10Z	
C911	067G 2152207RT	LOW E.S.R 22UF +/-20% 50V	
	709G2892 QA001	CONSUMPTIVE ASS'Y	
	095G 90 23	JUMPER WIRE	
	709G2892 QS001	CONSUMPTIVE ASS'Y	
	052G 2191 A	PAPER TAPE	
RJ904	061G1206000 7	RST CHIP MAX 0R05 1/4W	
RJ905	061G1206000 7	RST CHIP MAX 0R05 1/4W	
RJ906	061G1206000 7	RST CHIP MAX 0R05 1/4W	
	705GQ851001	OIL FOR DISAPPEAR ASS'Y	
	705GQ856018	IC901 ASS'Y	
IC901	056G 379510	C STR-W6253D-LF NO.2012 10A TO-220-6F	
	AM1G1730 8120	SCREW	
HS1	Q90G0182 1	HEAT SINK	
	705GQ893074	D920/D921 ASS'Y	
D920	093G 60239	FME-210B T0-220	
D921	093G1506 2	FMW-2156	
	AM1G1730 8120	SCREW	
HS2	Q90G6264 5	HEAT SINK	
	Q15G0409101	MAIN FRAME FOR P2051	
	Q33G0264ABJ 1L0100	OSD BUTTON	
	Q33G0265 2 1C0100	POWER? LENS	
	Q33G0266AED 1L0100	POWER BUTTON	
	Q34G0563AEDA1B0130	BEZEL(L20W-951)	
	Q34G0564ABJA1B0130	REAR COVER 20"	
	Q34G0565ABJ 1B0100	REAR POWER COVER	
	Q40G000262822A	CEL LABEL FOR TFT20W90PS G2	
	Q40G000267371A	POP LABEL FOR P2051	
	Q40G0002983 1A	VISTA LABEL	
	Q41G780067374A	P2051 QSG	
	Q44GA065101	EPS FOR P2051	
	Q44GA065201	EPS FOR P2051	
	Q44GA065673 1A	20 LCD CARTON	
	Q45G 88609107	PE BAG	
	Q50G 4 10	TIE (Y1900221)	
	Q52G 1185110	BIG TAPE FOR ENVISION	
	Q85G0117101	AC-SHIELD	

	Q41G780067340G	WARRANTY CARD	
	Q45G 76 28 RN R	PE BAG MANUAL	
	Q70G2001673 1A	P2051 CD MANUAL	
	040G 58162435A	P/N LABEL FOR MANUAL PE BAG	
	Q40G 20N673 5A	RATING LABEL	
	Q40G0001939 5A	CARTON LABEL	
E750	750GLS200KT1CCN000	PANEL LTM200KT01 A12 FQ SEC	2nd Source